

HelloDevice Lite Series

LS100W

User Guide

Version 1.4.0

2005-10-14

User Guide for the HelloDevice LS100W

Version 1.4.0

Firmware version 1.4.X

Last revised on October 14, 2005

Printed in Korea

Copyright

Copyright 2002, Sena Technologies, Inc. All rights reserved.

Sena Technologies reserves the right to make changes and improvements to its product(s) without providing notice.

Trademark

HelloDevice™ is a trademark of Sena Technologies, Inc.

Windows® is a registered trademark of Microsoft Corporation.

Ethernet® is a registered trademark of XEROX Corporation.

Notice to Users

When a system failure may cause serious consequences, protecting life and property against such consequences with a backup system or safety device is essential. The user agrees that protection against consequences resulting from system failure is the user's responsibility.

This device is not approved for life-support or medical systems.

Caution : Any changes or modifications to the equipment not expressly approved by the party responsible for compliance could void user's authority to operate the equipment.

Note : This unit was tested with shielded cables on the peripheral devices. Shielded cables must be used with the unit to insure compliance.

Technical Support

Sena Technologies, Inc.

210 Yangjae-dong, Seocho-gu

Seoul 137-130, Korea

Tel: (+82-2) 573-5422

Fax: (+82-2) 573-7710

E-Mail: support@sena.com

Website: <http://www.sena.com>

Revision History

Revision	Date	Name	Description
V1.3.2	2005-08-22	Sam Kim	Initial Release
V1.4.0	2005-10-14	JOJ	Descriptions for AP auto scan and IP filtering are added.

Contents

1: Introduction	6
1.1 Overview	6
1.2 Package Check List	7
1.3 Product Specification	8
1.4 Terminologies and Acronyms	9
2: Getting Started	11
2.1 Panel Layout	11
2.2 Connecting the Hardware	13
2.2.1 Connecting the Power	13
2.2.2 Connecting to the Wireless LAN	13
2.2.3 Connecting to the Device	14
2.3 Accessing Console Port	14
2.3.1 Using Serial Console	14
2.3.2 Using Remote Console	16
2.4 Command Usage	17
2.4.1 'set' Command	18
2.4.2 'get' Command	19
2.4.3 'help' Command	21
2.4.4 'factorydefault' Command	22
2.4.5 'save' Command	22
2.4.6 'exit' Command	22
2.4.7 'reboot' Command	23
3: Wireless LAN Configuration	24
3.1 Overview	24
3.1.1 Infrastructure Mode and Ad-hoc Mode	24
3.1.2 Network Name: SSID (Service Set Identifier)	24
3.1.3 Channel	24
3.1.4 Security	25
3.2 Setting	25
4: IP Address Configuration	28
4.1 Static IP	29
4.1.1 Overview	29
4.1.2 Static IP Configuration	29
4.2 DHCP	30
4.2.1 Overview	30
4.2.2 DHCP Configuration	31

4.3 IP Filtering	31
5: Host Mode Configuration	33
5.1 TCP Server Mode Operations	35
5.1.1 Overview	35
5.1.2 TCP Server Mode Configuration	37
5.2 TCP Client Mode Operations	38
5.2.1 Overview	38
5.2.2 TCP Client Mode Configuration	40
5.3 TCP Server/Client Mode Operations	40
5.3.1 Overview	40
5.3.2 TCP Server/Client Mode Configuration	42
6: Serial Port Configuration	43
7: System Administration	46
Appendix A: Connections	47
A.1 Serial Port Pin Outs	47
A.2 Serial Wiring Diagram	47
Appendix B: Well-known Port Numbers	48
Appendix C: Troubleshooting	49
C.1 Power/LED Status Troubleshooting	49
C.2 Serial Console Troubleshooting	49
C.3 Remote Console Troubleshooting	49
C.4 IP Address Troubleshooting	50
C.5 DHCP Troubleshooting	50
C.6 TCP Server Mode Operation Troubleshooting	50
C.7 Serial Communication Troubleshooting	51

1: Introduction

1.1 Overview

The HelloDevice Lite Series allows you to network-enable a variety of serial devices that were not originally designed to be networked. This capability brings the advantages of remote management and data accessibility to thousands of serial devices over the network.

The LS100W is a cost effective one port serial-Ethernet communication device. The LS100W supports RS232 serial communication allowing virtually any asynchronous serial device to be accessed over a network.

As for the Internet connectivity, the LS100W supports open network protocols such as TCP/IP allowing serial devices to be accessed over broadband network or conventional LAN (Local Area Network) environment.

The LS100W provides a management console, by using Telnet and the serial console port, which is under password protection. The LS100W also provides a management function with the use of the HelloDevice Manager Software Utility.

The LS100W was designed to accommodate unique requirements of the Retail POS, Security, Automation and Medical marketplaces.

Parts of this manual assume the knowledge of concepts of Internetworking protocols and serial communications. If you are not familiar with these concepts, please refer to the standards or documentation based on each subject.

1.2 Package Check List

- LS100W external box
- 110V or 230V Power supply adapter
- Serial console/data cable
- A hardcopy of Quick Start Guide
- CD-ROM including the HelloDevice Manager and User Guide

1.3 Product Specification

Serial Interface	One male DB9 serial port for data communication/serial console	
	Serial speeds 1200bps to 115200bps	
	Flow Control: None, Hardware RTS/CTS	
	Signals: Rx, Tx, RTS, CTS, DTR, DSR, GND	
Network Interfaces	Wireless LAN Specification : IEEE802.11b Wireless LAN 11Mbps	
	Frequency Band : 2400 ~ 2485MHz	
	Channels Support	US : 11(1 ~ 11)
		ETSI : 13(1 ~ 13)
		Korea : 13(1 ~13)
	Operating Range	Indoor : 50 meter @ 11Mbps
		Outdoor : 300 meter @ 11Mbps
	Radio Power	US : 0.021 Watts
		ETSI : 0.01 Watts
		Korea : 0.008 Watts
	Channel Spacing : 5Mhz	
	Operation Mode : Infrastructure, Ad Hoc	
Wired Equivalent Privacy(WEP) : MD5 Auto Generate, Hex or ASCII 64bits,128bits		
Supports static and dynamic IP address		
Protocols	ARP, IP/ICMP, TCP, Telnet, DHCP client, PPPoE	
Security	User ID & Password	
Management	Telnet or serial console port or HelloDevice Manager	
	Full-featured system status display	
Diagnostic LED	Power Ready 10 Base-T Link, Act Serial Rx/Tx for data serial port	
Power	Supply voltage 9.0V ~ 30V DC	
	Supply current 300mA @ 9VDC	
Environmental	Operating temperature: 0 ~ 55 °C Storage temperature: -4 ~ 66 °C	
Physical properties	Dimension 100 mm L (3.9 in.) 72 mm W (2.8 in.) 29 mm H (1 in.)	
	Weight 300g	
Approvals	FCC(A), CE(A), MIC	
Warranty	5-year limited warranty	

1.4 Terminologies and Acronyms

The network terminologies used frequently in this manual are defined clearly to help you attain a better understanding of the LS100W.

MAC address

On a local area network or other network, the MAC (Media Access Control) address is the computer's unique hardware number. (On an Ethernet LAN, it's the same as your Ethernet address.)

It is a unique 12-digit hardware number, which is composed of 6-digit OUI (Organization Unique Identifier) number and 6-digit hardware identifier number. The LS100W has the MAC address of 00-01-95-xx-xx-xx, which is labeled on the bottom side of the external box.

Host

A user's computer connected to the network

In Internet protocol specifications, the term "host" means any computer that has full two-way access to other computers on the Internet. A host has a specific "local or host number" that, together with the network number, forms its unique IP address.

Session

A series of interactions between two communication end points that occur during the span of a single connection

Typically, one end point requests a connection with another specified end point and if that end point replies agreeing to the connection, the end points take turns exchanging commands and data ("talking to each other"). The session begins when the connection is established at both ends and terminates when the connection is ended.

Client/Server

Client/Server describes the relationship between two computer programs in which one program, the client, makes a service request from another program, the server, which fulfills the request.

A server is a computer program that provides services to other computer programs in the same or other computers, whereas a client is the requesting program or user in a client/server relationship. For example, the user of a Web browser is effectively making client requests for pages from servers all over the Web. The browser itself is a client in its relationship with the computer that is getting and returning the requested HTML file. The computer handling the request and sending back the HTML file is a server.

Table 1-1 Acronym Table

ISP	Internet Service Provider
PC	Personal Computer
NIC	Network Interface Card
MAC	Media Access Control
LAN	Local Area Network
UTP	Unshielded Twisted Pair
ADSL	Asymmetric Digital Subscriber Line
ARP	Address Resolution Protocol
IP	Internet Protocol
ICMP	Internet Control Message Protocol
UDP	User Datagram Protocol
TCP	Transmission Control Protocol
DHCP	Dynamic Host Configuration Protocol
SMTP	Simple Mail Transfer Protocol
FTP	File Transfer Protocol
PPP	Point-To-Point Protocol
PPPoE	Point-To-Point Protocol over Ethernet
HTTP	HyperText Transfer Protocol
DNS	Domain Name Service
SNMP	Simple Network Management Protocol
UART	Universal Asynchronous Receiver/Transmitter
Bps	Bits per second (baud rate)
DCE	Data Communications Equipment
DTE	Data Terminal Equipment
CTS	Clear to Send
DSR	Data Set Ready
DTR	Data Terminal Ready
RTS	Request To Send

2: Getting Started

This chapter describes how to set up and configure the LS100W for the first time..

- 2.1 *Panel Layout* explains the panel layout and LED indicators.
- 2.2 *Connecting the Hardware* describes how to connect the power, the network, and the serial device to the LS100W.
- 2.3 *Accessing Console Port* describes how to access the console port by using a serial console at a local site or telnet console at a remote site.
- 2.4 *Command Usages* described how to use command set of the LS100W to configure and view parameter values and status.

Following items are pre-required to get started.

- One DC power adapter (included in the package).
- One serial console cable for configuration (included in the package).
- One RS-232 serial cable for connecting the RS-232 serial device.
- One PC with Network Interface Card (hereafter, NIC) and/or one RS232 serial port.
- Terminal emulation program running on the PC
- One Ethernet cable

2.1 Panel Layout

The LS100W has five LED indicator lamps, which serve to display the current system status. The first lamp indicates the status of system power supply and the second indicates whether the system is currently running. The third lamp indicates the transmission status of the data communication serial port. Lamps 4 and 5 indicate the IEEE 802.11b Wireless LAN connection and its activity, respectively.

Table 2-1 describes the function of each LED indicator lamp

Lamp		Function
Status	Power	Turned on if power is supplied
	Ready	Turned to GREEN when system is running.
Serial Ports	Serial Rx/Tx	Blinks whenever there is an incoming or outgoing data stream transmits through the serial port of the LS100W.
Wireless LAN	Link	Turned to ORANGE when connected to a Wireless LAN Network.
	Act	Blinks whenever there is an incoming or outgoing packet transmission activity through the LS100W Wireless LAN port.



Figure 2-1. The panel layout of the LS100W

2.2 Connecting the Hardware

This section describes how to connect the LS100W to the serial device for initial testing.

- Connect a power source to the LS100W.
- Connect the LS100W to a serial device through serial data cable.

2.2.1 Connecting the Power

Connect the power jack to the power connector of the LS100W using the DC power adapter that is included in the package. If power is properly supplied, the [Power] lamp will light up a solid red color.

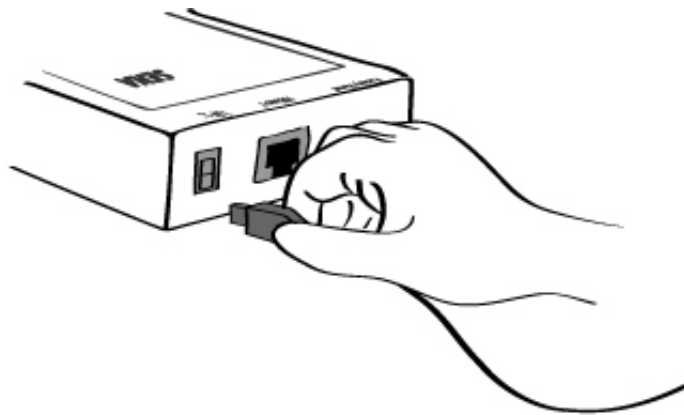


Figure 2-2. Connecting the Power to the LS100W

2.2.2 Connecting to the Wireless LAN

An 802.11b Wireless LAN card is embedded in the LS100W. When power is connected correctly, the card will automatically search for the Wireless LAN access point and attempt to connect to the Wireless LAN access point (AP). If the Wireless LAN cable is properly connected to the Wireless LAN access point, the LS100W will have a valid connection to the Wireless LAN network. A proper connection will be indicated as follows:

- The [Link] LED lamp on the LS100W front panel will remain solid orange.
- The [Act] LED lamp on the LS100W front panel will blink continuously to indicate that incoming and outgoing Wireless LAN packets are being transferred

To connect the LS100W to a Wireless LAN access point, users must first set the corresponding information on the LS100W, such as the SSID of the Wireless LAN access point.

Please refer to the Wireless LAN Settings section in Chapter 3 to set the appropriate parameters for a Wireless LAN connection.

2.2.3 Connecting to the Device

Connect the serial data cable to the LS100W and the serial device as shown below. Ensure that power has been correctly supplied to both the serial device and the LS100W.

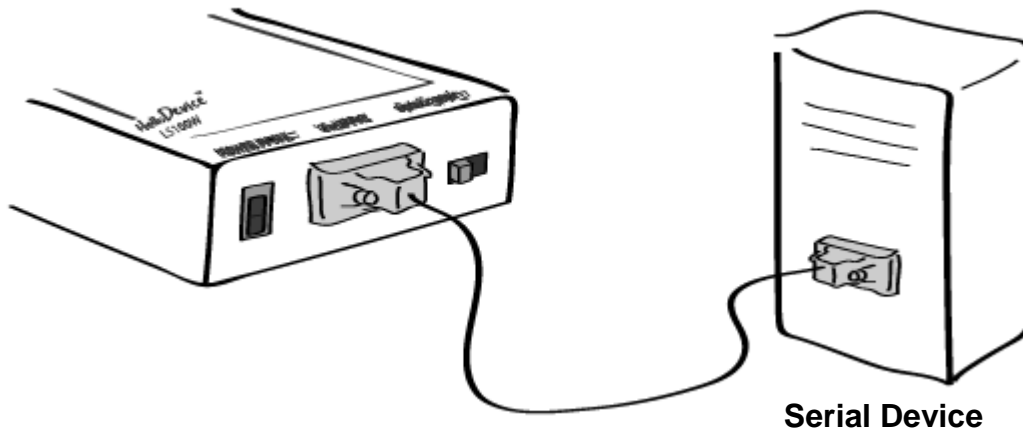


Figure 2-3. Connecting a Serial Device to the LS100W

2.3 Accessing Console Port

There are two ways to access console port of the LS100W depending on whether the user is located at a local site or at a remote site.

- Serial console:

Local users can connect directly to the serial console port of the LS100W using serial console/data cable (null-modem cable). The serial port of the LS100W is used as the console port as well as the data port. To use the serial port as the console port, slide Data/Console switch to the Console side.

- Remote console:

Remote users can make a telnet connection to the remote console port (port 23) of the LS100W via TCP/IP network.

Both methods require the user to log into the LS100W in order to continue.

2.3.1 Using Serial Console

- 1) Connect the one end of the serial console cable to the serial port of the LS100W.

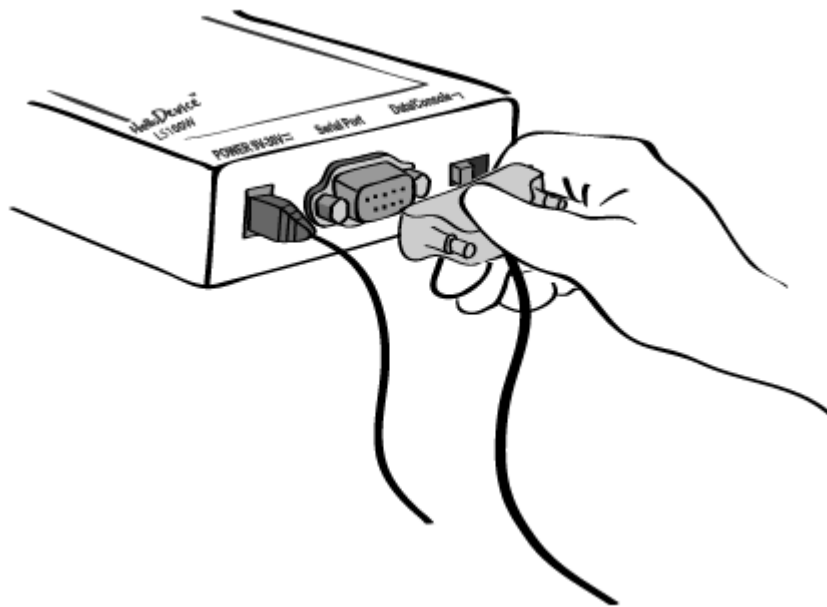


Figure 2-4. Connecting a serial console cable to the LS100W

- 2) Connect the other end of the cable to the serial port of user's computer.
- 3) Slide Data/Console switch to Console side.

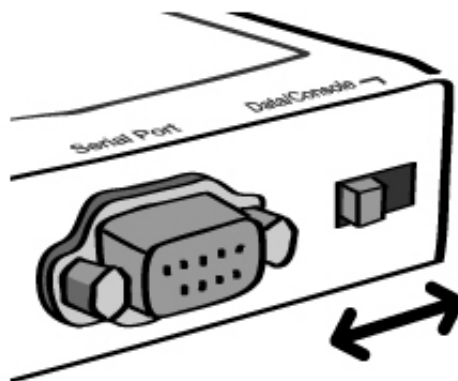


Figure 2-5. Data/Console switch of the LS100W

- 4) Run a terminal emulator program such as HyperTerminal. Set up the serial configuration parameters of the terminal emulation program as follows:
9600 Baud rate, Data bits 8, Parity None, Stop bits 1, Hardware flow control
- 5) Press [ENTER] key.
- 6) Type the user name and password to log into the LS100W. A factory default setting of the user name and password are both **admin**.
- 7) If the user logged into the LS100W successfully, command prompt screen will appear on the

computer as shown in Figure 2-6.

```
login: admin
password: *****
Type 'help' to get command usages
> help
set group par1 [par2 ...] + <CR>
- group = 'ip','host','serial' or 'admin'
- par1 ... = configuration parameters. Use * to keep a parameter's value
get [group] + <CR>
- group = 'ip','host','serial','admin' or 'status'
- If group is specified, shows settings of the group.
- If group is omitted, shows settings of all groups.
factorydefault [option] + <CR>
- if option is omitted, all parameters are set with factory default values.
- if option='-ip',
  all parameters except IP settings are set with factory default values.
help [group] + <CR>
- If group is omitted, shows this screen.
- If group is specified, shows 'set' command usage of the group.
save + <CR>
- Save changes
exit + <CR>
- Exit without rebooting the device
reboot + <CR>
- Exit and reboot the device
>
```

Figure 2-6. The LS100W console screen

From the command prompt screen, users can set, get and save configuration parameter values using 'set', 'get' and 'save' command. Users also can exit the console or reboot the device using 'exit' and 'reboot' command. The usage of the commands can be found using 'help' command. For command usages description, please refer to section *2.4 Command usage*.

2.3.2 Using Remote Console

The LS100W provides remote console feature via telnet as well as serial console so that users can access the LS100W at remote site for configuration and monitoring purposes. The IP address of the LS100W must be known before users can access the remote console port. The port number for the remote console is 23, which is a TCP port number assigned for Telnet.

Only one user can log into the remote console or serial console at a time. If the serial console is established while a remote console is established, current remote console will be halted and no more remote console will be established until serial console is finished.

To access remote console of the LS100W, please use the step as follows:

- 1) Run a telnet program or a program that supports telnet functions such as TeraTerm-Pro or HyperTerminal. The target IP address and the port number should be those of the LS100W. If required, specify the port number as 23. Type the following command in the command line

interface of your computer.

```
telnet 192.168.1.254
```

Or run a telnet program with parameters as follows.

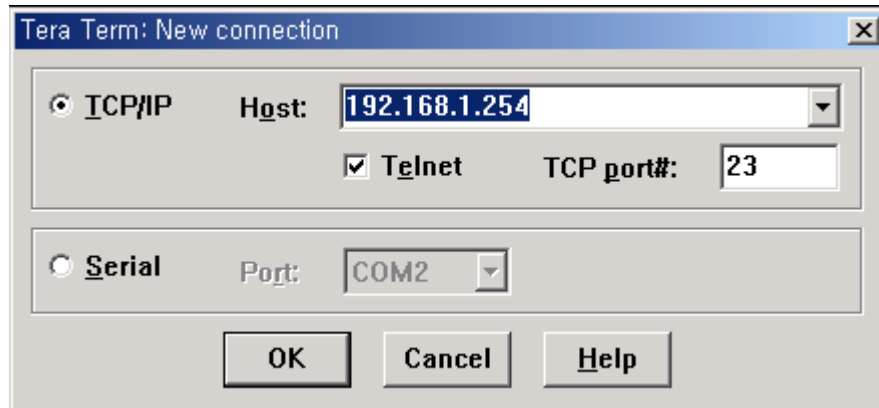


Figure 2-7 Telnet program set up example

- 2) The user has to log into the LS100W. Type the user name and password. A factory default setting of the user name and password are both **admin**.
- 3) If the user logs into the LS100W successfully, the same command prompt screen as the serial console will be displayed. The user can set, get, save configuration parameters and exit console, reboot the device as like the serial console.
- 4) If serial console or the other remote consoles are connected already, new console will not be established at all.

2.4 Command Usage

The LS100W provides several simple commands for configuration and control of the LS100W. Table 2-2 summarizes command set which LS100W supports.

Table 2-2 LS100W command set summary

Command	Description	Result
set group par1 [par2 ...] + <CR>	Set configuration parameters - group = 'ip', 'host', 'serial' or 'admin' - par1 ... = configuration parameters. Use * to keep a parameter's value	If success, "OK" + <CR> + <LF> If error "ERROR" + <CR> + <LF>
get [group] + <CR>	Get configuration parameter values - group = 'ip', 'host', 'serial', 'admin' or 'status' - If group is specified, shows settings of the	Parameter value display

	group. - If group is omitted, shows settings of all groups.	
help [group] + <CR>	Shows command usage screen. - If group is omitted, shows help screen. - If group is specified, shows 'set' command usage of the group.	Help message display
factorydefault [option] + <CR>	Restore factory default values - if option is omitted, all parameters are set with factory default values. - if option='-ip', all parameters except IP settings are set with factory default values.	If success, "OK" + <CR> + <LF> If error "ERROR" + <CR> + <LF>
save + <CR>	Save changes	If success, "OK" + <CR> + <LF> If error "ERROR" + <CR> + <LF>
exit + <CR>	Exit without rebooting the device (changes are not applied)	If success, "OK" + <CR> + <LF> If error "ERROR" + <CR> + <LF>
reboot + <CR>	Exit and reboot the device	None

2.4.1 'set' Command

With 'set' command, users can configure parameter values of the LS100W for each environment. Basic 'set' command usage is as follows:

set group par1 [par2 ...] + <CR>

where,

group = 'ip', 'host', 'serial' or 'admin'

par1 par2 ... = configuration parameters. Use * to keep a parameter's value

The 'group' is the category where the parameters should be entered. For example, if users want to set parameters related to the IP configuration, use set command as shown in the Figure 2-8.

```
> set ip static 192.168.1.100 255.255.255.0 192.168.1.1
OK
>
```

Figure 2-8 IP configuration example screen

In the above example, the first parameter 'ip' indicates that the following parameters are IP configuration parameters. The second parameter 'static' indicates that the LS100W will use static IP address of the third parameter '192.168.1.100'. The fifth parameter indicates the subnet mask and the next indicates the default gateway IP address.

If users want to change only one of the parameters of the group, users can omit trailing parameters

and/or can use '*' to keep a parameter value. The screen below will show how to change subnet mask only without changing IP address and gateway IP address.

```
> set ip static * 255.255.0.0
OK
>
```

Figure 2-9 Changing only one parameter value example

Command usage of 'set' will differ depending on the groups. Each 'set' command usage of the group can be found using 'help group' command. For example, if users want to know how to use 'set' command to configure IP configuration, typing 'help ip' + <CR> will show 'set' command usage for the IP configuration as shown in Figure 2-10.

```
> help ip
set ip ipmode par1 par2 ...
- ipmode: static=Static IP / dhcp=DHCP / pppoe=PPPoE
- parameters:
if ipmode = static,
    par1 = IP address,
    par2 = subnet mask,
    par3 = gateway
if ipmode = dhcp,
    no parameters required
if ipmode = pppoe,
    par1 = PPPoE username,
    par2 = PPPoE password
>
```

Figure 2-10 Help screen example

Note:

The changed values will not take effect until 'save' and 'reboot' commands are invoked. For more details, please refer to section 2.4.5 ~ 2.4.7.

2.4.2 'get' Command

With 'get' command, users can view the current parameter values and status of the LS100W. Basic 'get' command usage is as follows:

get [group] + <CR>

where,

group = 'ip','host','serial', 'admin' or 'status'

- **If group is specified, shows settings of the group.**
- **If group is omitted, shows settings of all groups.**

The group means the category where parameters belong to as like 'set' command. For example, if users want to view parameter values related to IP configuration, get command as Figure 2-11 can be used.

```
> get ip
IP_mode: static
IP_address: 192.168.1.100
Subnet_mask: 255.255.255.0
Gateway: 192.168.1.1
>
```

Figure 2-11 Getting ip configuration screen

'status' group is a special group where 'set' command does not apply. 'get status' will show current system status screen.

```
> get status
Serial_no.: LS100W-0207_test
MAC_address: 00-01-95-77-88-99
F/W_REV.: V1.2.0
Current_IP: 192.168.0.125
>
```

Figure 2-12 Getting status screen

If group is omitted, get command will show all of the parameter values as shown in Figure 2-13.

```
> get
--- Status ---
Serial_no.: LS100W-0207_test
MAC_address: 00-01-95-77-88-99
F/W_REV.: V1.2.0
Current_IP: 192.168.0.125
--- Admin ---
Username: admin
Password: admin
Devicename: LS100W Device
--- IP ---
IP_mode: dhcp
--- Host ---
Host_mode: tcps
Local_port: 6001
Inactivity_timeout(sec): 300
--- Serial ---
Baudrate: 9600
Data_bits: 8_bits
Parity: None
Stop_bits: 1_bit
Flow_control: None
DTR_option: Always_high
DSR_option: None
Interchar_timeout(ms): 50
>
```

Figure 2-13 Getting all parameters screen

2.4.3 'help' Command

With 'help' command, users can find command usage help in the console screen. Basic command usage is as follows:

help [group] + <CR>

where,

if group is omitted, overall help screen will be displayed

if group is specified, 'set' command usage of specified group will be displayed.

Figure 2-14 shows help screen when no group is specified while Figure 2-16 shows help screen with 'ip' group specified.

```
> help
set group par1 [par2 ...] + <CR>
- group = 'ip','host','serial' or 'admin'
- par1 ... = configuration parameters. Use * to keep a parameter's value
get [group] + <CR>
- group = 'ip','host','serial','admin' or 'status'
- If group is specified, shows settings of the group.
- If group is omitted, shows settings of all groups.
help [group] + <CR>
- If group is omitted, shows this screen.
- If group is specified, shows 'set' command usage of the group.
factorydefault [option] + <CR>
- if option is omitted, all parameters are set with factory default
values.
- if option='-ip',
    all parameters except IP settings are set with factory default
values.
save + <CR>
- Save changes
exit + <CR>
- Exit without rebooting the device
reboot + <CR>
- Exit and reboot the device
```

Figure 2-14 Help screen

```
> help ip
set ip ipmode par1 par2 ...
- ipmode: static=Static IP / dhcp=DHCP / pppoe=PPPoE
- parameters:
if ipmode = static,
    par1 = IP address,
    par2 = subnet mask,
    par3 = gateway
if ipmode = dhcp,
    no parameters required
if ipmode = pppoe,
    par1 = PPPoE username,
```

```
par2 = PPPoE password
```

Figure 2-15 Help screen with 'ip' group specified

2.4.4 'factorydefault' Command

With 'factorydefault' command, users can load factory default parameter values in console. Command usage of 'factorydefault' is as follows:

factorydefault [option] + <CR>

where,

- if option is omitted, all parameters are set with factory default values.
- if option='-ip', all parameters except IP settings are set with factory default values.

Loaded values are not saved until 'save' command invoked. After 'factorydefault" command, 'save' and 'reboot' commands are required for changes to take effect.

```
> factorydefault (or factorydefault -ip)
OK
> save
OK
> reboot
```

Figure 2-16 Factory default reset screen

2.4.5 'save' Command

With 'save' command, current parameter changes are saved to non-volatile memory. Command usage of 'save' command is as follows:

save + <CR>

Saved changes will be applied if the LS100W is rebooted by 'reboot' command or manual rebooting.

2.4.6 'exit' Command

With 'exit' command, current serial or remote console session will be closed. However, changed parameters are not applied until the LS100W is manually rebooted. Command usage of 'exit' command is as follows:

exit + <CR>

2.4.7 'reboot' Command

With 'reboot' command, the LS100W will be rebooted immediately. Changed parameter values will be applied when the LS100W is up again. Command usage of 'reboot' is as follows:

reboot + <CR>

3: Wireless LAN Configuration

3.1 Overview

IEEE 802.11, a Wireless LAN standard, is the basic network element used by this device. It requires one or more nodes and a wireless LAN access point (hereinafter referred to AP). Often, the word “node” refers to the notebook computers, personal computers, and PDA’s that use Wireless LAN cards or LS100W products, in this section we will assume the “node” as LS100W, and describe further.

3.1.1 Infrastructure Mode and Ad-hoc Mode

An AP is most often used to connect the LS100W to the Ethernet. However, it can also be used to connect to the Internet. This type of connection is referred as an “infrastructure mode.” On wireless computer networks, “ad-hoc mode”, also called “peer-to-peer mode”, is a method for LS100W devices to directly communicate with each other without an AP. Ad-hoc mode can be very useful in replacing cables between existing devices with a wireless connection.

3.1.2 Network Name: SSID (Service Set Identifier)

A Wireless LAN network can be configured under different names at depending on the AP’s configuration. SSID is an ID value that distinguishes one wireless network from another. If a network is configured in the infrastructure mode, users need to input and set the target AP’s SSID into LS100W so that the LS100W can communicate with the target AP. Therefore, users need first to check the target AP’s SSID. On the other hand, when using the ad-hoc mode, inter-communicating LS100Ws should have the same SSID. The SSID can be set to a maximum length of 16 bytes, and it can be set using ASCII characters.

3.1.3 Channel

The LS100W searches for all accessible 802.11b Wireless LAN channels periodically to find other AP’s. When the LS100W is first booted up, it searches for a preset AP (default value is ‘Default’). When the AP is found, it accesses the AP automatically. The LS100W will use the channel belonging to the network group in which it belongs. When using the infrastructure mode, the LS100W checks the channel values being used in AP, and automatically sets the channel values to be identical to the AP channels values. In ad-hoc mode, the two channels in LS100W should be given identical values.

Even when a certain value or an asterisk (‘ * ’) symbol is entered in a channel value entry using

the 'set' command, the LS100W will ignore those values and automatically set the values as the AP channel values of the group in which it belongs.

3.1.4 Security

802.11b based applications are different from wired Ethernet applications in the way they support security functions. The 802.11 Committee recognizes that the wired Ethernet supports a very high level of internal security. Therefore, when creating policies for Wireless LAN standards, the Committee has aimed to ensure that Wireless has the same high level of security as that of the Ethernet.. WEP (wired equivalent privacy) uses RSA Security's RC4 PRNG encryption algorithm and 40-bit shared key to encrypt data. Thus, in the LS100W, 5 bytes of ASCII values are used to represent 64 bits of WEP1, and 13 bytes of ASCII values are used to represent 128 bits of WEP1. The shortcoming of WEP is that it can encrypt only the body of the data frame. Frame headers and other types of frames are not encrypted.

3.2 Setting

For proper operation of the LS100W in a wireless environment, users must set the wireless parameters in the LS100W's Wireless LAN according to the requirements of the designated Wireless LAN network environment. To do this, users must check the following:

- Type of Wireless LAN network (infrastructure/ad-hoc)
 - Wireless LAN SSID and channel
 - Whether a Wireless LAN WEP is used, and the WEP setting status (number of bits, key values, and coding methods)
 - Whether Wireless LAN authentication protocols are used for the Wireless LAN connection
- Some Wireless LAN networks require authentication protocols (like MD5).

Users can check the current Wireless LAN settings by using console commands:

```
> get wlan
Name: Default
Type: Infrastructure
National Code: Korea
Encryption: None
PassKey: Alphanumeric
KeyWord: WEP128BitTest
>
```

Table 3-1 Wireless Lan Setting Parameters

Parameter	Values
-----------	--------

Network Type	Infrastructure mode or Ad-hoc mode
SSID	Default / Max 16 characters
Channel	CH .1 ~ CH.13 (can check during booting sequence)
WEP	64 or 128 bits
PassKey	ASCII or Hexadecimal

- **SSID**

Factory default value of SSID is "Default". User can change this value according to the SSID of his AP to be used. If the value of SSID in LS100W is not changed from factory default value, "Default", LS100W scans APs in the neighborhood and selects the AP that has the strongest signal level automatically. This auto scan and selection is continued until the value of SSID is changed from "Default" at every reboot. But if there is an AP with "Default" SSID, LS100W will connect to this AP first.

- **WEP1**

If the WEP function is to be used, a WEP key value must be set. The WEP1 key field is used to select between a 64 bit key or a 128 bit key. If WEP1 is set to '0', the WEP function will be disabled.

- **WEP2**

The WEP2 field selects whether ASCII code or Hexadecimal code will be used to represent the data values in WEP1.

- **Passkey**

The Passkey field is for user authentication. If the WEP1 value is 64 bits, the user must enter a 5-digit password in ASCII code. If the WEP1 value is 128 bits, the user must enter a 13-digit ASCII password in ASCII code. For example, if WEP2 is set as a Hexadecimal code type, the user could enter 0x0123456789 (when WEP1 is set to '64 bits'), or 0x0123456789ABCDEF (when WEP2 is set to '128 bits').

The basic 'set' commands for Wireless Lan (wlan) settings are as follows:

set wlan SSID type National_code ch WEP1 WEP2 Password

where,

SSID: Max 16 character

type: I=infrastructure / a=Adhoc

National Code:

1.USA/2.Canada/3.EU,Australia/4.Spain/5.France/6.Korea/7.Japan/8.Others

ch: set channel number when adhoc mode

WEP1: 0=none/ 1=64bit / 2=128bit

WEP2: a=ASCII type pass, h=Hexadecimal type pass

Password: example='Max13character'

Note :

If the type is set as infrastructure, channel will be set to the same value of the connected AP internally regardless of the value set by the user.

Followings are example commands to set the wireless Lan settings of LS100W',

* SSID=Default, National Code=Korea, infrastructure , arbitrary channel number, WEP Key disabled

```
➤ set wlan Defalut i 6 * 0(National Code : Korea, WEP Key disabled)
```

* SSID=Default, National Code=Korea, Adhoc , channel number=4, WEP Key disabled

```
> set wlan Default a 6 4 0
```

4: IP Address Configuration

A valid IP address of the LS100W needs to be assigned before it starts to work in the user's network environment. A network system administrator may provide the user with this IP address setting information for the network. The IP address must be unique within the network. Otherwise, the LS100W will not have a valid connection to the network.

Users can choose the desired IP mode out of the two IP operating modes, i.e., **Static IP** and **DHCP**. The factory default IP mode is **DHCP** mode. Table 4-1 shows the parameter items for IP configuration.

Table 4-1. IP configuration parameters

Static IP	IP address
	Subnet mask
	Default gateway
DHCP	No parameters required

Basic 'set' command usage for IP configuration is as follows:

set ip ipmode par1 par2 ...

where,

ipmode: 'static' for Static IP / 'dhcp' for DHCP

parameters:

if ipmode = static,

par1 = IP address, par2 = subnet mask, par3 = gateway

if ipmode = dhcp,

no parameters required

4.1 Static IP

4.1.1 Overview

In the **Static IP** mode, users have to manually specify all the parameters such as **IP addresses** of the LS100W, valid **subnet mask** and the **default gateway** IP address.

IP address is an identification number assigned to a computer as a permanent address on the network. Computers use IP addresses to identify and talk to each other on the network. Choose a proper IP address which is unique and valid for your network environment.

A subnet represents all the network hosts at one geographic location, in one building, or on the same local area network. When there is any outgoing packet over the network, the LS100W will check whether the desired TCP/IP host, specified in the packet, is on the local network segment with the help of the **subnet mask**. If the address is proven to be on the same network segment as the LS100W, the connection is established directly from the LS100W. Otherwise, the connection is established through the given default gateway.

A **gateway** is a network point that acts as an entrance to another network. Usually, the computers that control traffic within the network or at the local Internet service provider are gateway nodes. The LS100W needs to know the IP address of the default gateway computer in order to communicate with the hosts outside the local network environment. For correct information on the gateway IP address, please refer to the network administrator.

4.1.2 Static IP Configuration

To configure IP configuration parameters of the LS100W, use set command as follows

```
set ip static ip_address subnet_mask default_gateway + <CR>
```

where,

ip_address = IP address of the LS100W

subnet_mask = Subnet mask

default_gateway = Default gateway IP address

Figure 4-1 shows IP configuration command example screen. To apply changes, users have to invoke 'save' and 'reboot' command after changing configuration.

```
> set ip static 192.168.1.10 255.255.255.0 192.168.1.1
OK
```

Figure 4-1. Setting IP configuration parameters for Static IP mode

4.2 DHCP

4.2.1 Overview

Dynamic Host Configuration Protocol (DHCP) is a communications protocol that allows network administrators to manage and automate the assignment of IP addresses centrally in an organization's network. DHCP allows a network administrator to supervise and distribute IP addresses from a central point and automatically send a new IP address when a computer is plugged into a different place in the network.

As described in the section 4.1, the IP address must be entered manually at each computer in Static IP mode and, if computers move to another location in another part of the network, a new IP address must be entered. Meanwhile, all the parameters including the IP address, subnet mask, gateway, DNS servers will be automatically configured when the IP address is assigned in DHCP mode. DHCP uses the concept of a "lease" or amount of time for which a given IP address will be valid for a computer. All the parameters required are assigned by the DHCP server, and each DHCP client computer receives the proper network information at boot-up.

To obtain an IP address, the LS100W sends a corresponding DHCP request as a broadcast over the network after each reset. The reply generated by the DHCP server contains the IP address as well as the subnet mask, gateway address, DNS servers and the lease time. The LS100W immediately places this information in its non-volatile memory. If the operating time reaches the lease time, the LS100W will request the DHCP server for renewal of its lease time. If the DHCP server approves extending the lease, the LS100W can continue to work with the current IP address. Otherwise, the LS100W will start the procedure to request a new IP address to the DHCP server.

A DHCP sever assigns IP addresses dynamically from an IP address pool, which is managed by the network administrator. This means DHCP client, i.e. the LS100W, receives a different IP address each time it boots up. To prevent the case that users do not know the IP address of the LS100W in such environments, its IP address should be reserved on the DHCP server side. In order to reserve the IP address in the DHCP network, the administrator needs the MAC address of the LS100W found on the label sticker at the bottom of the LS100W:

```
MAC=00:0B:6B:19:16:9E
```

4.2.2 DHCP Configuration

To set the LS100W to work in DHCP mode, just set IP mode to DHCP as in Figure 4-2.

```
> set ip dhcp
OK
>
```

Figure 4-2. Setting DHCP mode

4.3 IP Filtering

The LS100W has an IP address based filtering feature to prevent unauthorized remote hosts from accessing LS100W. The user can allow one of the following scenarios by changing the parameter settings:

- Only one host of a specific IP address can access the LS100W
- Hosts on the a specific subnet can access the LS100W
- Any host can access the LS100W

The user may allow a host or a group of hosts to access the LS100W. Then the user must enter the IP address and subnet to be allowed for accessing.

To allow only a specific host to the LS100W, enter the IP address of the specific host and just give 255.255.255.255 for the subnet. To allow any hosts to the LS100W, give 0.0.0.0 for both of the IP address and subnet. Please refer to Table 4-1 for more details.

Table 4-1 Input examples of allowed remote hosts

Allowable Hosts	Input format	
	Base Host IP address	Subnet mask
Any host	0.0.0.0	0.0.0.0
192.168.1.120	192.168.1.120	255.255.255.255
192.168.1.1 ~ 192.168.1.254	192.168.1.0	255.255.255.0
192.168.0.1 ~ 192.168.255.254	192.168.0.0	255.255.0.0
192.168.1.1 ~ 192.168.1.126	192.168.1.0	255.255.255.128
192.168.1.129 ~ 192.168.1.254	192.168.1.128	255.255.255.128

For example, to allow only a 192.168.1.120 host for accessing, enter the following commands,

1. DHCP mode

```
> set ip dhcp 192.168.1.120 255.255.255.255
OK
> save
OK
```

```
> reboot
```

2. Static IP mode (ip : 192.168.161.5 , subnet : 255.255.0.0 , gateway :192.168.1.1)

```
> set ip static 192.168.161.5 255.255.0.0 192.168.1.1 192.168.1.120 255.255.255.255  
OK  
> save  
OK  
> reboot
```


5: Host Mode Configuration

Host mode represents the operating session mode of the LS100W. Several host modes are available for the data communication between the serial device and remote hosts. Since TCP is connection-oriented protocol, server, client, server/client modes are provided. Table 5-1 shows the brief description of the host modes. A factory default host mode is **TCP Server**.

Table 5-1. The LS100W TCP/IP session modes

Mode	Description
TCP server	Select this mode, when users want the LS100W to operate as a TCP server. The LS100W stands by until there is any TCP connection request. If TCP connection is not already established at that time, the LS100W accepts the request and the session is established. In the established state, it transmits the data through the serial port if there is any data from the remote host. Since the LS100W supports only one TCP session for the serial port, the additional TCP connection request will be rejected if already established. This mode is useful when users want to send data to the serial device at any time they want.
TCP client	Select this mode, when users want the LS100W to operate as a TCP client. When the serial device sends data or pre-defined timer is expired, the LS100W tries to establish a TCP connection to a remote server through its TCP port. If a TCP session is established between them, the LS100W will send data to the server. If there's any data from the server during the session, it will also send the data through the serial port. However, if the LS100W failed to connect to the remote server, the data from the serial port will be discarded. This is useful when the serial device initiates sending data such as data gathering application.
TCP server/client	If you are not sure which mode to choose, select this mode since it will be applied in most applications. In this mode, the LS100W operates as TCP server AND client. If the connection is not established, it will accept all incoming connection and connect to the remote host if there are any data from the serial device. Otherwise, it will send data back and forth. In summary, the LS100W will work as if it is virtually connected to the remote host.

For each host mode, required parameters for configuration is summarized in Table 5-2.

Table 5-2 Host mode configuration parameters

TCP Server	Listening TCP port
	Inactivity timeout (sec)
TCP Client	Destination IP
	Destination TCP Port
	Cyclic connection Interval
	Inactivity timeout (sec)
TCP Server/Client	Listening TCP port
	Destination IP
	Destination TCP Port
	Cyclic connection Interval
	Inactivity timeout (sec)

Basic 'set' command usage for host mode configuration is as follows:

set host hostmode par1 par2 ...

where,

hostmode: tcps=TCP server / tcpc=TCP client / tcpsc=TCP server & client

parameters:

if hostmode = TCP server (tcps),

par1 = listening TCP port,

par2 = inactivity timeout (sec)

if hostmode = TCP client (tcpc),

par1 = destination IP address,

par2 = destination TCP port,

par3 = cyclic connection interval (min),

par4 = inactivity timeout (sec)

if hostmode = TCP server & client (tcpsc),

par1 = listening TCP_port,

par2 = destination IP address,

par3 = destination TCP port,

par4 = cyclic connection interval (min),

par5 = inactivity timeout (sec)

*** set cyclic connection interval to 0 not to use cyclic connection**

*** set inactivity timeout to 0 for unlimited timeout**

For easier understanding of TCP modes, a simplified **State Transition Diagram** is often used. And too help users understand the diagram, the TCP state of the LS100W is briefly described as follows.

- Listen

It represents "a waiting for a connection request from any remote host". It is a default start-up mode when it is set as *TCP server* mode. This state is valid only in *TCP server* mode operation.

- Closed

It means "No connection state at all". If the data transfer is completed, the state is changed to this state if one of the host requests disconnection request. If it is in *TCP server* mode, the state is automatically changed to [Listen] mode. It is a default start-up mode when it is set as *TCP client* mode or *TCP server/client* mode.

- Sync-Received

In *TCP server* mode, the state will be changed from [Listen] to [Sync-Received], if any remote host sends connection request. If the LS100W accepts the request, the state will be changed into [Established]. This state is not valid in *TCP client* mode.

- Sync-Sent

If the LS100W sends a connection request to a remote host, the state is changed from [Closed] to [Sync-Sent]. This state is maintained until the remote host accepts the connection request. This state is valid only in *TCP client* mode.

- Established

It represents “an open connection”. If one of the hosts accepts a connection request from the other host, the connection is opened and state is changed into [Established].

- Data

When it is in [Established] state, data from a host will be transferred to the other one. For easier understanding of the TCP session operation, we called the state as [Data] state when actual data transfer is performed. Actually, the [Data] mode is a part of [Established] state as is described in the RFC 793 [Transmission Control Protocol]. This is a normal state for the data transfer phase of the connection.

5.1 TCP Server Mode Operations

5.1.1 Overview

The LS100W works as a TCP server, and the default TCP state is [Listen] in this mode. The LS100W supports only one TCP socket connection per one serial port. If a connection is currently established, the additional connection requests will be rejected. The remote host will be either Ethernet-Serial communication devices acting as a TCP client or a socket program acting as a TCP client running on users' PC.

1) Typical State Transition

[Listen] --> [Sync-Received] --> [Established] --> [Data] --> [Closed] --> [Listen]

At start-up, an initial TCP state is [Listen]. If there is any incoming TCP connection request, the state will be changed into [Sync-Received], then [Established], which means a session is opened. For a while, data will be transferred between the hosts. This is the [Data] state. The session will be disconnected due to the request of one of them, which is [Closed] state. And then, the state is automatically changed to its original state, [Listen].

2) Operations

Serial data transfer

When a session has been established, the LS100W reads the data from the serial port buffer till internal serial buffer is full or inter-character time interval reaches the time specified as *inter-character timeout* value. Then, it transfers the data to the IP address of the remote host. If there's no remote host connected to the LS100W, all the incoming data from the serial port are discarded.

Session disconnection

The connected session will be disconnected when the remote host sends disconnection request or when no data transfer activity is found through the serial port for a certain amount of time, which is "*Inactivity timeout*".

Figure 5-1 shows the State Transition Diagram of the session operations in *TCP server mode*.

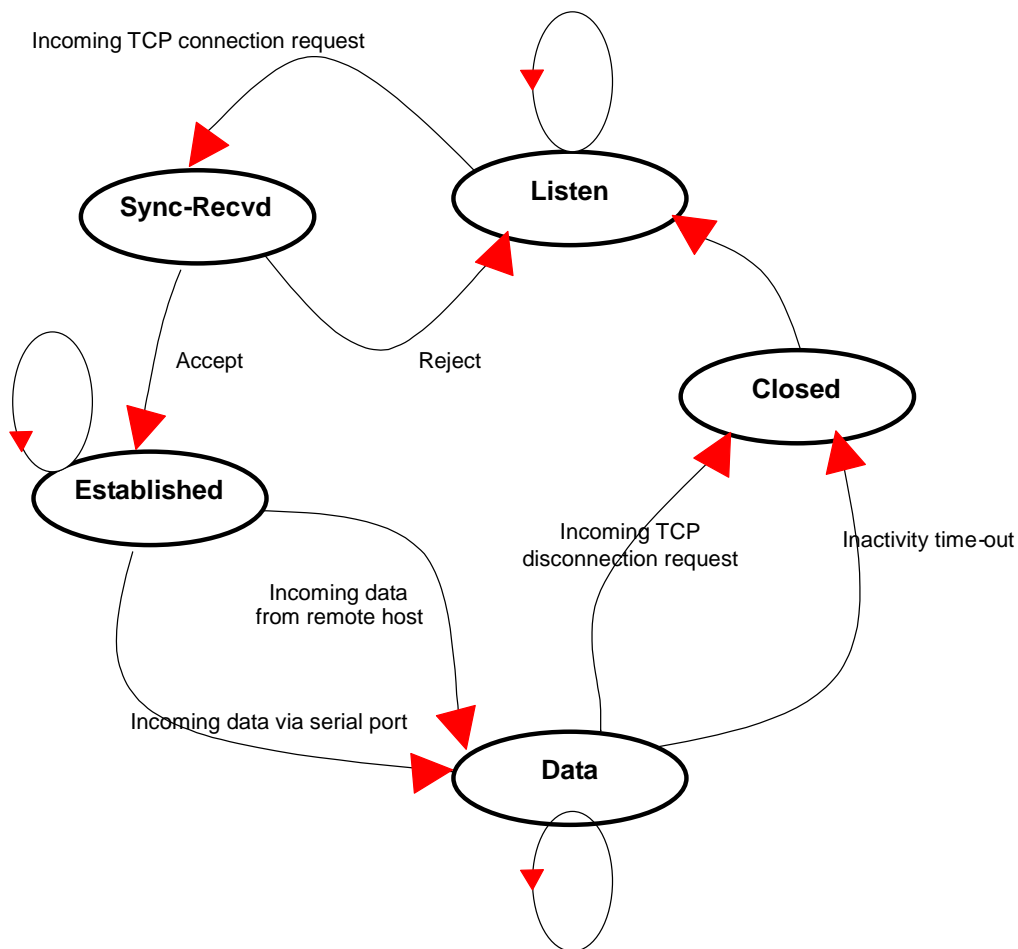


Figure 5-1. State Transition Diagram of TCP server mode

5.1.2 TCP Server Mode Configuration

To configure the LS100W to work as a TCP server, use 'set' command as follows:

```
set host tcps listening_TCP_port inactivity_timeout + <CR>
```

where,

listening_TCP_port: Listening TCP port

Inactivity_timeout: Inactivity timeout in seconds.

Listening TCP port is the TCP port number through which remote host can connect a TCP session, and, send and receive data. Incoming connection request to the ports other than *Listening TCP Port* will be rejected. The LS100W does not restrict the number to a specific range, but it is strongly recommended not to use the well-known ports for certain application (See Appendix D. *Well-known Port Numbers*). To change the port number, select menu 2 on the *TCP Server* mode configuration screen.

Inactivity timeout is set to maintain the TCP connection state as *Closed* or *Listen* in TCP host mode unless there is any data transfer between the serial device and the LS100W. If there is no incoming or outgoing data through the serial port during the specified *inactivity timeout* interval, the existing TCP connection will be closed automatically.

If the value of *inactivity timeout* is set to 0, the current TCP connection is maintained unless there's no connection close request. Although *inactivity timeout* is disabled, the LS100W will check the connection status between the LS100W and the remote host by sending "keep alive" packets periodically. If the remote host does not answer the packets, it is regarded that the connection is down unintentionally. Then, the LS100W will force to close the existing TCP connection.

Note:

At least, this value should be set larger than that of *inter-character timeout*. To prevent the unintended loss of data due to the session disconnection, it is highly recommended that this value is set large enough so that the intended data transfer is completed.

Figure 5-2 shows TCP server mode setting example:

```
> set host tcps 6001 300
OK
>
```

Figure 5-2. TCP server mode setting

5.2 TCP Client Mode Operations

5.2.1 Overview

The LS100W works as a TCP client, and the default TCP state is [Closed] in this mode. The remote host will be either Ethernet-Serial communication devices acting as a TCP server or a socket program acting as a TCP server running on users' PC.

1) Typical State Transition

[Closed] --> [Sync-Sent] --> [Established] --> [Data] --> [Closed]

At start-up, an initial TCP state is [Closed]. If there is any incoming data through the serial port, the LS100W will try to connect to a user-defined remote host. Then, the state will be changed to [Sync-Sent], which means the connection request is being sent. If the remote host accepts the request, the state will be changed into [Established], which means a session has been opened. For a while, data will be transferred between the hosts. This is [Data] state. The session will be disconnected due to the request of one of them, which is its original state, [Closed].

2) Operations

Serial data transfer

Whenever the serial device sends data through the serial port of the LS100W, data will be accumulated to the serial port buffer of the LS100W. If the internal serial port buffer is full or inter-character time interval reaches to the time specified as *inter-character timeout* value, it tries to connect to the user-defined IP address of the remote host, if TCP session is not established yet. If the LS100W succeeds in connecting to the remote host, the data in the serial port buffer will be transferred to the host. Otherwise, all the data stored in the buffer will be cleared.

Session disconnection

The connected session will be disconnected when the remote host sends disconnection request or when no data transfer activity is found through the serial port for certain amount of time, which is "*Inactivity timeout*". All the data remained in the serial port buffer will be cleared when it is disconnected.

Connection request from remote host

All the incoming TCP connection requests will be rejected in *TCP client* mode.

Cyclic Connection

If *Cyclic Connection* function is enabled, the LS100W will make an attempt to connect to the user-defined remote host at certain interval even if there's no incoming serial data from the device. If the remote host prepares certain data, it will be transferred to the serial device via its serial port after the connection is established. Eventually, users can monitor the serial device periodically by making the remote host send the serial command to the LS100W whenever it is connected to the remote host. This option is useful when users need to gather the device information periodically even if the serial device does not send its data periodically. Figure 4-3 shows the State Transition Diagram of the session operations in *TCP client* mode.

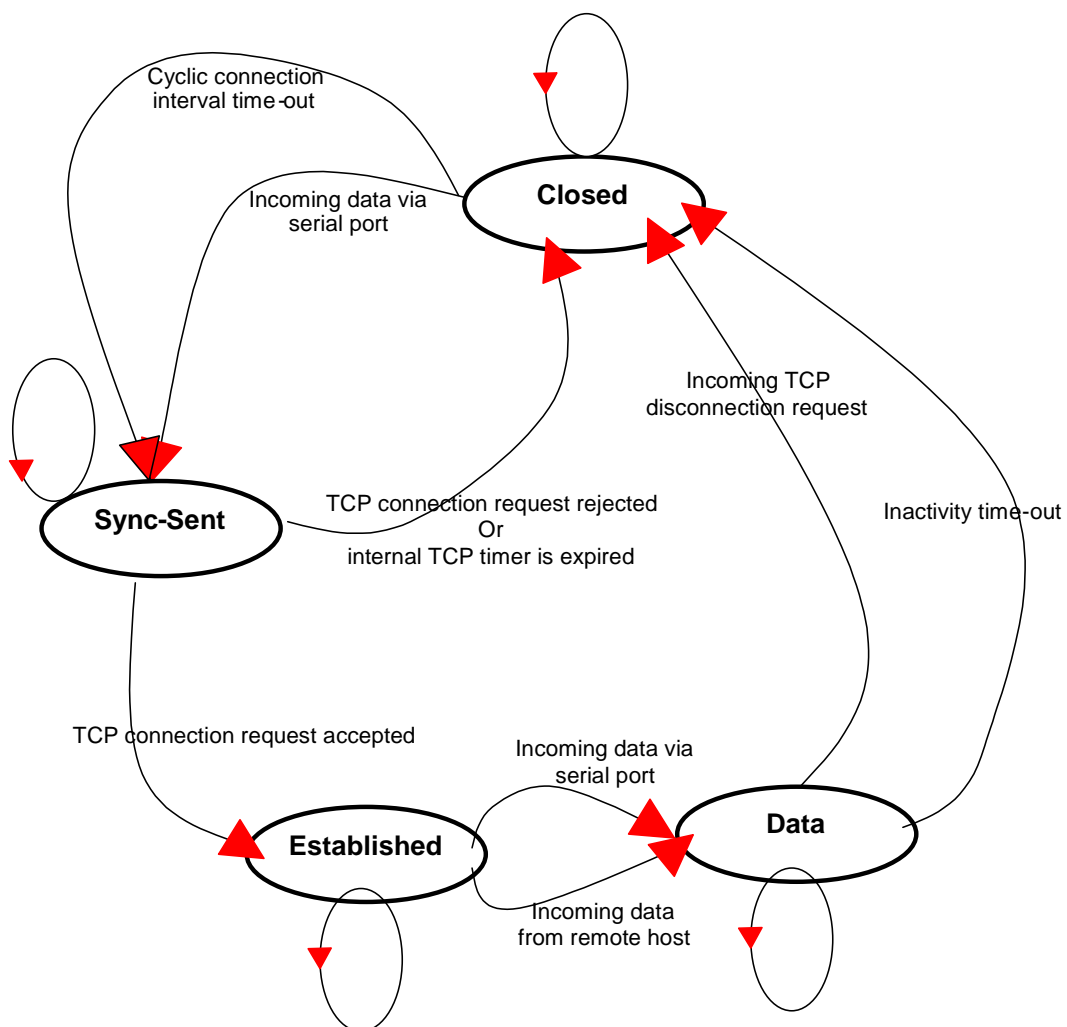


Figure 5-3. State Transition Diagram of TCP client mode

5.2.2 TCP Client Mode Configuration

To configure the LS100W to work as a TCP client, use set command as follows:

```
set host tcpc dest_ip dest_port cyclic_connection_interval inactivity_timeout + <CR>
```

where,

dest_ip = destination IP address

dest_port = destination TCP port

cyclic_connection_interval = cyclic connection interval in minutes

inactivity_timeout = inactivity timeout in seconds.

Destination IP address and **destination TCP Port** are the information on the remote host to which the LS100W will try to connect in TCP client mode. The IP address (or domain name) should be specified together with the TCP port number.

Cyclic connection interval is the time interval at which the LS100W will try to connect to the remote host regardless of the existence of incoming data from the serial port. If the interval is specified with a valid value other than 0, the function is enabled. The time interval will be the specified value by the unit of minute. If the interval is entered as 0, cyclic connection feature will be disabled.

Inactivity timeout is the same as described in TCP server mode setting section.

Figure 5-4 shows TCP client mode setting example:

```
> set host tcpc 192.168.1.1 6001 10 300
OK
>
```

Figure 5-4 TCP client mode setting

5.3 TCP Server/Client Mode Operations

5.3.1 Overview

The LS100W works as either TCP server or client according to the situation. This will be the typical mode for most applications, since it will transfer the data either from serial port or from TCP port. The default TCP state is [Listen] which is the same as that of *TCP server mode*.

1) Typical State Transition

[Listen] --> [Sync-Received] --> [Established] --> [Data] --> [Closed] --> [Listen]

Or

[Listen] --> [Sync-Sent] --> [Established] --> [Data] --> [Closed] --> [Listen]

The initial state is [Listen]. If there are data coming from the serial port, it will connect to the remote host as a TCP client. If there is incoming connection request from the remote host, it will accept the connection as a TCP server, and then transfer data through the serial port. Thus, users can assume that the LS100W is always connected to the specified remote host.

2) Operations

The only difference from *TCP server* mode is that the LS100W will try to connect and send serial data to the remote host even if the TCP session is not established. The difference from *TCP client* mode is that it will accept incoming connection request from remote host if the session is not established. The detailed operation principles are the same as that of *TCP server* and *TCP client* mode.

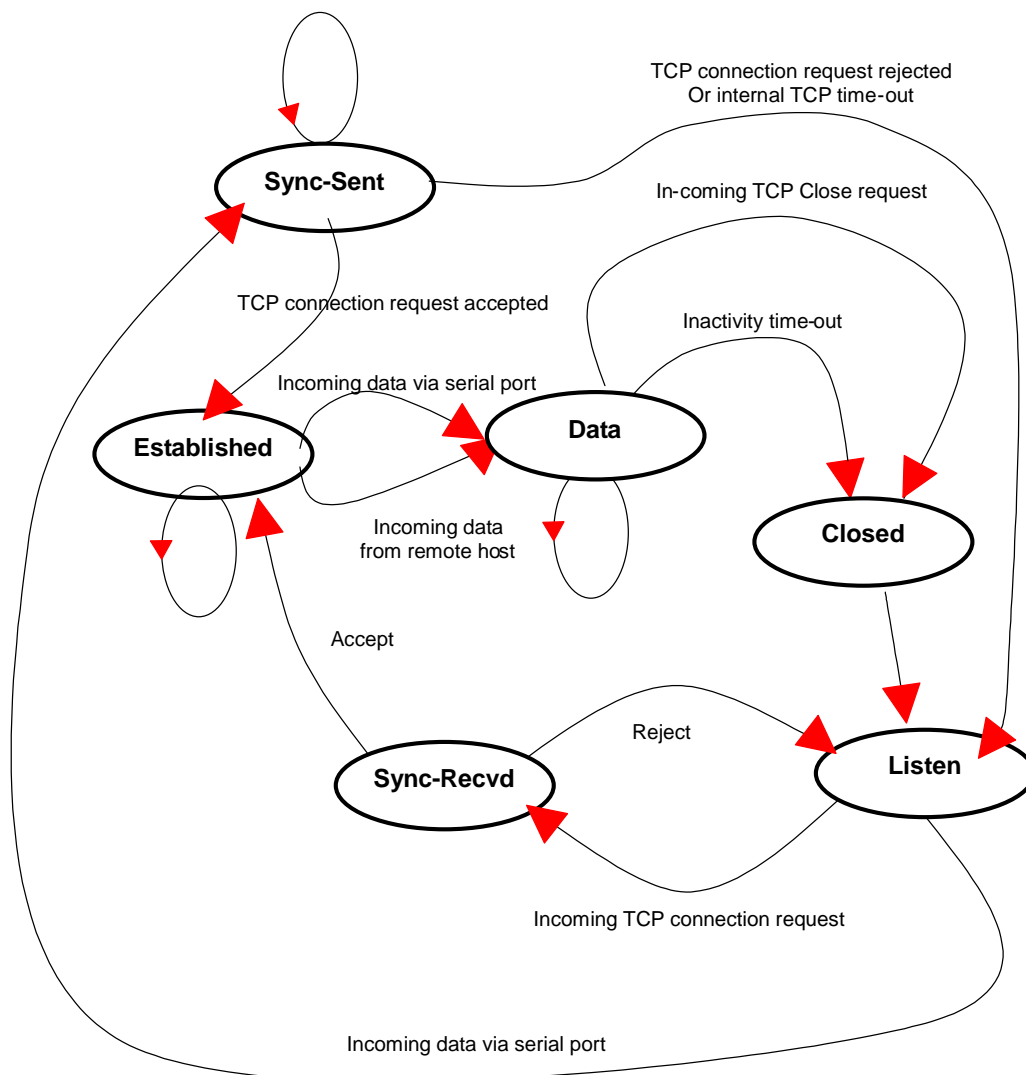


Figure 5-5. State Transition Diagram of TCP server/client mode

5.3.2 TCP Server/Client Mode Configuration

To configure the LS100W to work as a TCP server/client mode, use 'set' command as follows:

set host tcpsc listening_port dest_ip dest_port cyclic_connection_interval inactivity_timeout
where,

listening_port = listening TCP port

dest_ip = destination IP address

dest_port = destination TCP port

cyclic_connection_interval = cyclic connection interval in minutes

inactivity_timeout = inactivity timeout in seconds.

Parameter definitions for TCP server and client mode configuration are the same with TCP server mode and TCP client mode parameters.

Figure 5-6 shows TCP server/client mode setting example:

```
> set host tcpsc 6001 192.168.1.100 7001 10 300
OK
>
```

Figure 5-6 TCP server/client mode setting

6: Serial Port Configuration

To attach the serial device to the LS100W serial port, its serial port operation should match exactly to that of the serial device. Serial port configuration parameters are summarized in Table 6-1.

Table 6-1. Serial Port Configuration parameters

Parameter	Values
Baud rate	1200, 2400, 4800, 9600, 19200, 38400, 57600, or 115200
Data bits	7 bits or 8 bits
Parity	None, Even or Odd
Stop bits	1 bit or 2 bits
Flow control	None, Hardware (RTS/CTS)
DTR option	Always HIGH, Always LOW, or Show TCP connection
DSR option	None, Accept TCP connection only by HIGH, or Open/Close TCP connection
Inter-character timeout	Inter-character timeout value in milliseconds

To configure serial port parameters, use 'set' command as follows:

```
set serial baudrate data_bits parity stop_bits flow_control dtr_option dsr_option  
interchar_timeout(ms)
```

where,

baudrate: 1200, 2400, 4800, 9600, 19200, 38400, 57600, or 115200

data_bits: 7=7-bits / 8=8-bits

parity: n=none / e=even / o=odd

stop_bits: 1=1-bit / 2=2-bits

flow_control: n=none / h=hardware

dtr_option: h=always high / l=always low / s=show tcp connection

dsr_option: n=none / a=accept only by high / o=open,close TCP connection

interchar_timeout: inter-character timeout value in milliseconds

The factory default settings of **baud rate**, **data bits**, **parity** and **stop bits** are *9600*, *8 data bits*, *No-parity* and *1 stop bit* respectively. Among the serial configuration, there are three serial modes the LS100W does not support. The LS100W does not support 7 data bits, No parity, 1 stop bit configuration. In this case, the LS100W will operate as 7 data bits, No parity, 2 stop bit mode. In case the LS100W is configured as 8 data bits, Even(or Odd) parity, 2 stop bits mode, the LS100W will operate as 8 data bits, Even (or Odd) parity, 1 stop bit mode.

The factory default setting of the **flow control** is *None*. Only hardware flow control using RTS/CTS is

supported by the LS100W. Hardware flow control method controls data communication flow by sending signals back and forth between two connected devices.

The purpose of the DTR/DSR pin is to emulate modem signal control or to control TCP connection state by using serial port signal. The DTR is a write-only output signal, whereas the DSR is a read-only input signal in the LS100W side.

The **DTR option** can be set to one of three types: *always high, always low or show TCP connection*. If the DTR behavior is set to *show TCP connection*, the state of the DTR pin will be maintained high if the TCP connection is established.

The **DSR option** can be set to one of three types: *none, allow TCP connection only by high or open/close TCP connection*. *Allow TCP connection only by HIGH* is valid only if host mode is TCP server or equivalent. If this option is set, the incoming TCP connection request will be accepted only when the DSR signal is high state. *Open/close TCP connection* is valid only if the host mode is a TCP client or equivalent. If the DSR behavior is set to *open/close TCP connection*, the high state of the DSR pin will make the LS100W send a connection request to the specified destination host, whereas the low state close a connection.

Inter-character timeout defines the interval that the LS100W fetches the overall serial data from its internal buffer. If there is incoming data through the serial port, the LS100W stores data into the internal buffer. The LS100W transfers data stored in the buffer via TCP/IP, only if the internal buffer is full or if the inter-character time interval reaches to the time specified as *inter-character timeout*.

Optimal inter-character timeout would be different according to your application but at least it must be larger than one character interval within specified baud rate. For example, assume that the serial port is set to 1200 bps, 8 Data bits, 1 stop bit, and no parity. In this case, the total number of bits to send a character is 10 bits and the time required to transfer one character is

$$10 \text{ (bits)} / 1200 \text{ (bits/s)} * 1000 \text{ (ms/s)} = 8.3 \text{ ms.}$$

Therefore, you have to set *inter-character timeout* to be larger than 8.3 ms. The *inter-character timeout* is specified in milliseconds and must be larger than 10 ms.

If users want to send the series of characters into a packet, serial device attached to the LS100W should send characters without time delay larger than *inter-character timeout* between characters and the total length of data must be smaller than or equal to the LS100W internal buffer size. The serial communication buffer size of LS100W is 1400 bytes.

Figure 5-1 shows serial port configuration example of 9600 bps, 7 data bits, even parity, 2 stop bits, hardware flow control, DTR shows TCP connection, No DSR behavior and inter-character time out of 10 ms:

```
> set serial 9600 7 e 2 h s n 10  
OK  
>
```

Figure 6-1 Serial port configuration

7: System Administration

Users can configure administrator username, password and device name using set command as follows:

set admin username password devicename

username: login username

password: login password

devicename: device name

Figure 7-1 shows administrative parameters configuration example:

```
> set admin adminuser adminpassword LS100W_test1
OK
>
```

Figure 7-1 Administration parameters configuration

Appendix A: Connections

A.1 Serial Port Pin Outs

The pin assignment of the LS100W DB9 connector is summarized in Table A-1. Each pin has a function according to the serial communication type configuration.

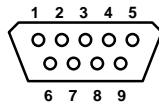


Figure A-1. Pin layout of the DB-9 connector

Table A-1. Pin assignment of the DB-9 connector

Pin	RS232
1	-
2	Rx
3	Tx
4	DTR
5	GND
6	DSR
7	RTS
8	CTS
9	-

A.2 Serial Wiring Diagram

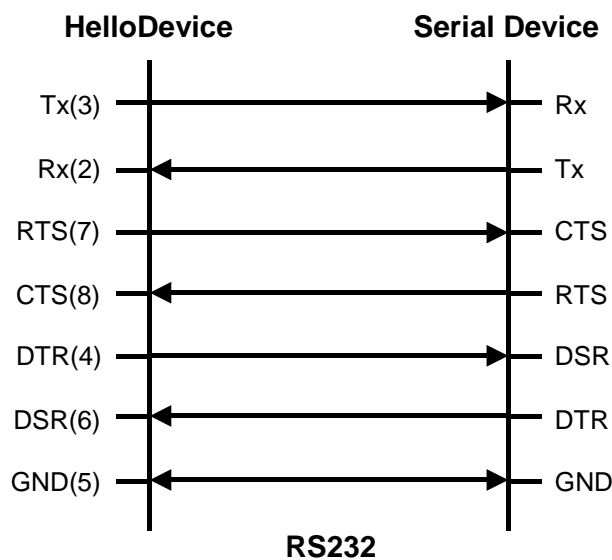


Figure A-2 RS232 wiring diagram

Appendix B: Well-known Port Numbers

The port numbers are divided into three ranges: the Well Known Ports, the Registered Ports, and the Dynamic and/or Private Ports. The Well Known Ports are those from 0 through 1023. The Registered Ports are those from 1024 through 49151. The Dynamic and/or Private Ports are those from 49152 through 65535.

The Well Known Ports are assigned by the IANA, and on most systems, can only be used by system processes or by programs executed by privileged users. Table B-1 shows famous port numbers among the well-known port numbers. For more details, please visit IANA website:

<http://www.iana.org/assignments/port-numbers>

Table B-1 Well-known port numbers

Port number	Protocol	TCP/UDP
21	FTP (File Transfer Protocol)	TCP
22	SSH (Secure SHell)	TCP
23	Telnet	TCP
25	SMTP (Simple Mail Transfer Protocol)	TCP
37	Time	TCP, UDP
39	RLP (Resource Location Protocol)	UDP
49	TACACS, TACACS+	UDP
53	DNS	UDP
67	BOOTP server	UDP
68	BOOTP client	UDP
69	TFTP	UDP
70	Gopher	TCP
79	Finger	TCP
80	HTTP	TCP
110	POP3	TCP
119	NNTP (Network News Transfer Protocol)	TCP
161/162	SNMP	UDP

Appendix C: Troubleshooting

C.1 Power/LED Status Troubleshooting

Problem	Cause	Action
Power LED does not light up	Power cable is not connected	Check power connection
	An invalid Wireless Connection state.	Check your Wireless configuration
ACT LED does not blink	LS100W is not connected to a Wireless network	Check your Wireless configuration

C.2 Serial Console Troubleshooting

Problem	Cause	Action
Serial console is not connected	Invalid serial cable	Be sure to use a serial console cable (null-modem cable) for serial console
	Invalid serial port configuration of terminal emulation program	Check serial port configuration of terminal emulation program: 9600 bps, 8 Data bits, No parity, 1 stop bit, Hardware flow control
	Invalid Console/Data switch position	Be sure that Console/Data switch position is Console side.
Serial console is halted for few seconds periodically	IP mode is DHCP, but IP is not assigned	If IP mode is set to DHCP but IP is not actually assigned because of DHCP server failure, serial console is halted for few seconds at every 20 seconds. Change IP mode to the static IP mode
Cannot login to console	Invalid username and/or password	Use valid username and password. If username and/or password are lost, perform factory default reset using factory reset switch. Factory default value of username and password are both <i>admin</i>

C.3 Remote Console Troubleshooting

Problem	Cause	Action
Cannot connect to the LS100W using telnet	The LS100W is not assigned valid IP address	Use serial console to assign valid IP address to the LS100W
	Someone is using serial console	Exit serial console and retry telnet connection
Cannot login to console	Invalid username and/or password	Use valid username and password. If username and/or password are lost, perform factory default reset using factory reset switch. Factory default value of username and password are both <i>admin</i>

C.4 IP Address Troubleshooting

Problem	Cause	Action
Cannot find IP address of the LS100W	LS100W is disconnected from your Wireless network.	Use serial console to find IP address
		Use HelloDevice Manager program to probe the LS100W on the network
HelloDevice Manager cannot probe the LS100W	The LS100W is not assigned valid IP address	Use serial console to assign valid IP address to the LS100W
	HelloDevice Manager and the LS100W are not on the same subnet	Run HelloDeviceManager on the PC that is on the same subnet with the LS100W

C.5 DHCP Troubleshooting

Problem	Cause	Action
Cannot lease IP address	DHCP server is not working	Check if DHCP server is working correctly
IP address of the LS100W is changed	DHCP server does not extend lease time	Check if DHCP server is working correctly

C.6 TCP Server Mode Operation Troubleshooting

Problem	Cause	Action
Cannot connect to the LS100W	IP configuration of remote host is invalid	Check if IP configuration of the remote host is valid
	Host mode of the LS100W serial port is not TCP server	Change the host mode of the LS100W serial port to TCP server or TCP server/client
	IP address of the LS100W or TCP port number is wrong	Specify valid IP address and TCP port number of the LS100W
	DSR option is set but DSR input is not high	Disable DSR option or make DSR input of the LS100W high
	TCP connection with the other host is established already	Close established TCP connection or connect later

C.7 Serial Communication Troubleshooting

Problem	Cause	Action
Serial data are not transferred by TCP/IP immediately	Too large inter-character timeout	Set inter-character timeout with smaller value
Cannot communicate with the LS100W	Invalid wireless or serial port configuration	Check if wireless and check to see that the serial port configuration of the LS100W are the same with that of the serial device
Invalid data transferred	Invalid serial port configuration	Check if serial port configuration is correct.