

# Promi-MSP™

**For Wireless Multi-Serial Communications,  
based on Bluetooth Technology**

Application Note:

Quick Installation Guide

*Preliminary*

by Bluetooth

Enabling Wireless Serial Communications

Both Promi-MSP and Promi-SD can be configured at one time conveniently using single Promi-MSP Wizard software. Legacy serial port applications can take advantage of Promi-MSP without modification using Serial/IP.

- 1 Install Promi-MSP Wizard and Serial/IP included in CD.



**Without installing Serial/IP, you can't make use of Serial/IP preset feature.  
Install Serial/IP before proceeding.**

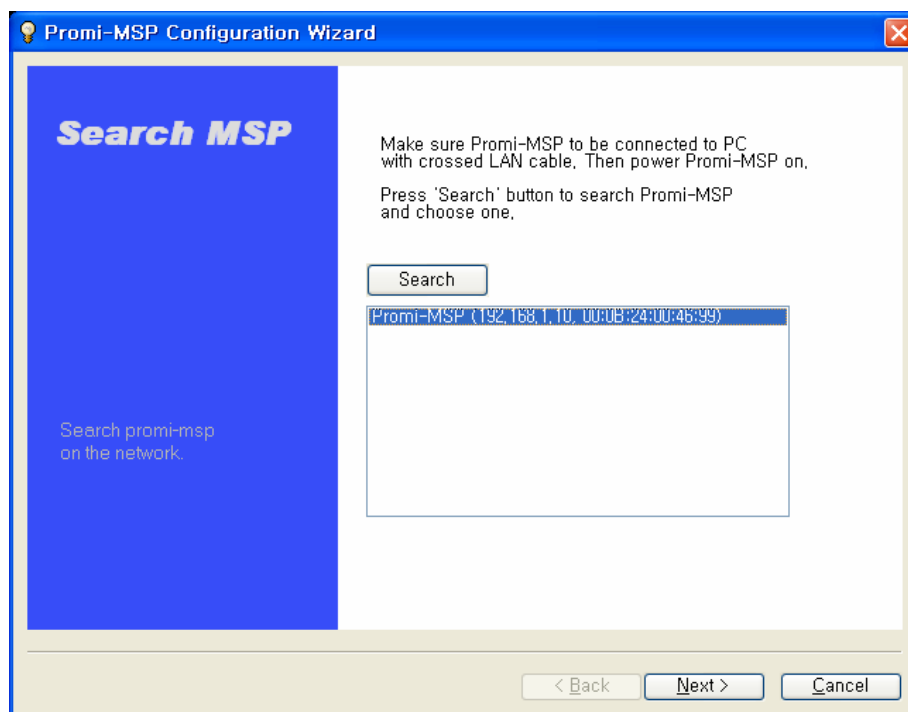
- 2 Connect Promi-MSP to PC with crossed LAN cable included in the package as below and power Promi-MSP up.

PC should be configured to get IP address by DHCP.

(Promi-MSP has DHCP server inside.)

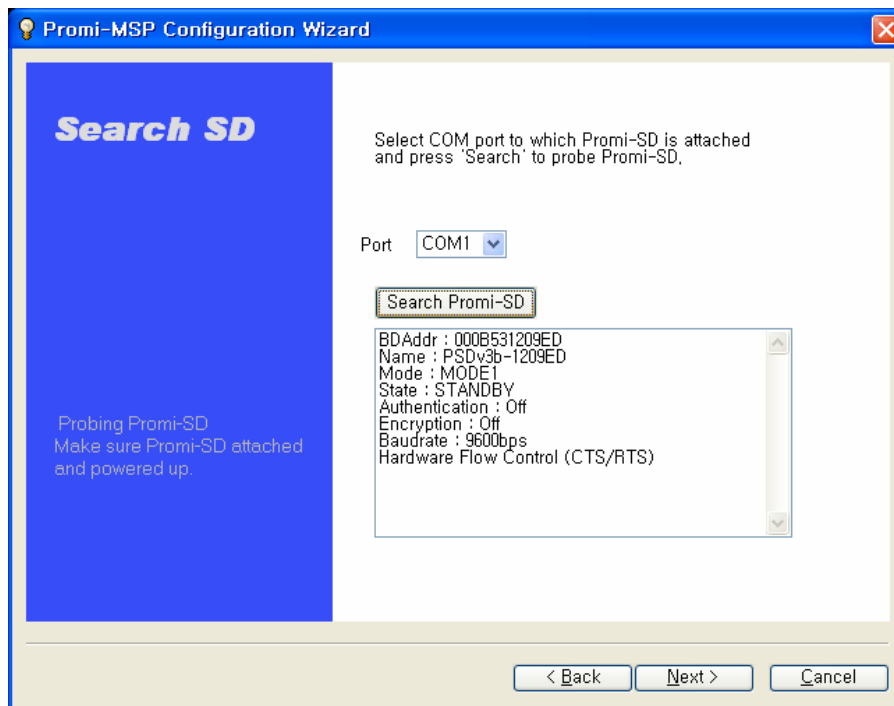


- 3 Make sure STATUS LED and LAN/ACT1 LED light in green.
- 4 Attach Promi-SD to PC's serial port and turn it on. Reset Promi-SD.
- 5 Execute mspwiz.exe. Press 'Search' to search Promi-MSP and choose one on the list box. Press 'Next' button to proceed.



- 6 Select COM port to which Promi-SD attached and press 'Search Promi-SD'.

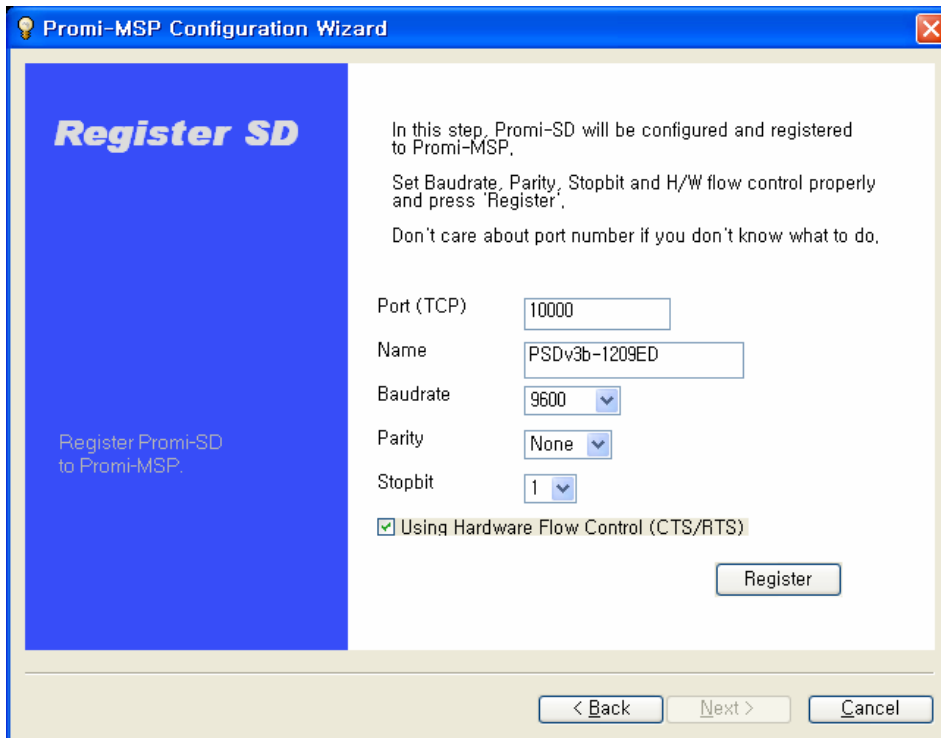
Information of probed Promi-SD will be displayed shortly.



Otherwise, check if Promi-SD turned on and initialize Promi-SD by pushing reset button on its side. Then, press 'Search Promi-SD' again. Also check if COM port selection correct.

7 In this step you can configure Promi-SD and register it to Promi-MSP.

Set Baudrate, Parity, Stopbit and Hardware flow control to fit Promi-SD to serial interface of your equipment. Then, press 'Register'.

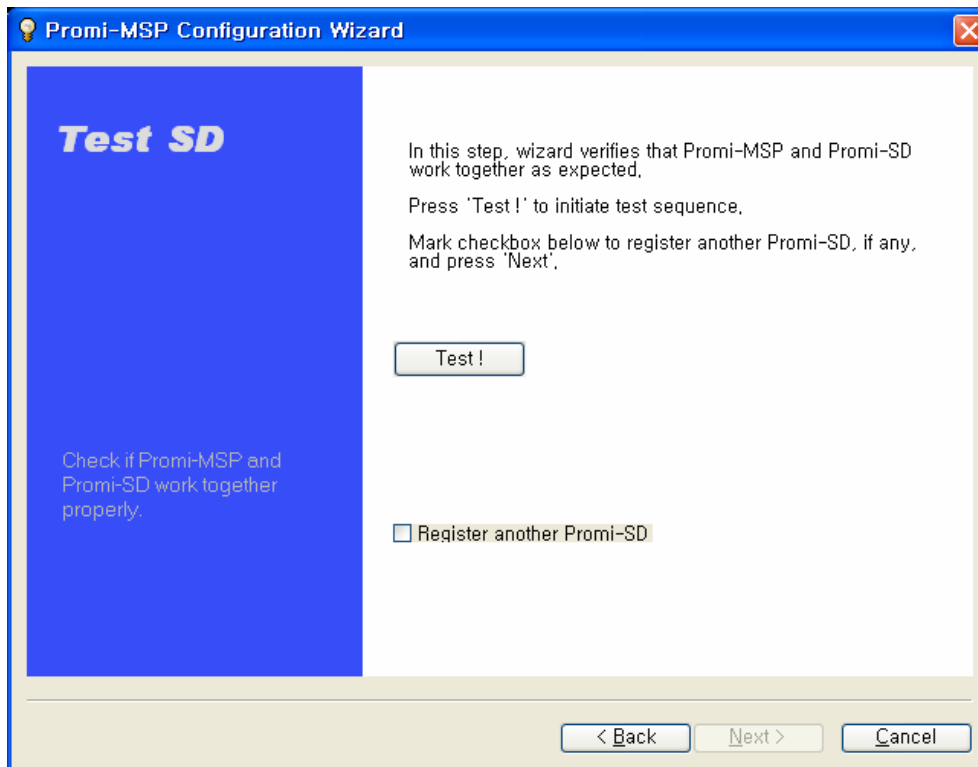


In the above case, for example, Promi-SD will be configured as 9600-8N1-HW, operated in Mode 1. You can reach Promi-SD at TCP 10000 port of Promi-MSP.

Proceed to next step.

8 To verify your configurations, initiate test sequence by pressing 'Test !'.

If everything goes well just as expected, 'Passed' dialog will pop up.



If you have more Promi-SDs to register, check 'Register another Promi-SD' checkbox.

Activating this option and pressing 'Next', you will go back to step 6 - 'Search SD'. Replace registered Promi-SD with new one and repeat step 6 to 8 over again.

Proceed to next step to finish configuration.



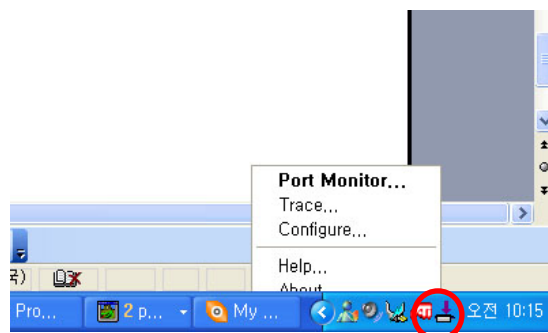
Configuration can be exported to Serial/IP as presets. With these presets, you don't need to remember IP address of Promi-MSP and port number of each registered Promi-SDs.

If Serial/IP has not been installed on your PC, 'Export to Serial/IP preset' will be disabled.

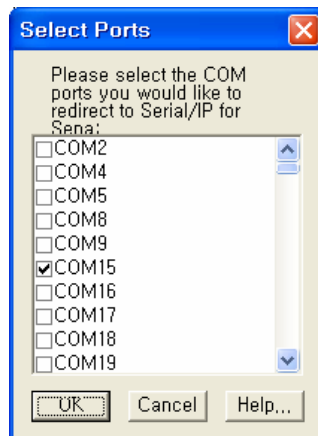
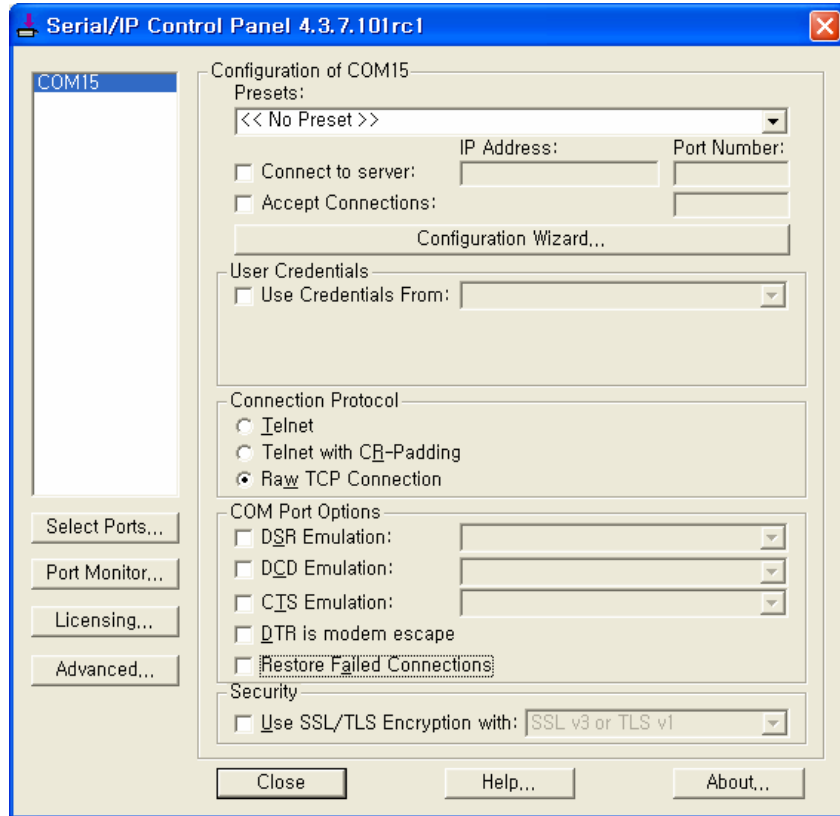
If not, press Export to Serial/IP preset.

Now, Promi-MSP and Promi-SD is ready. From now on, configure Serial/IP please.

Right-click Serial/IP Tray Icon on right-bottom of screen with your mouse and click 'Configure'



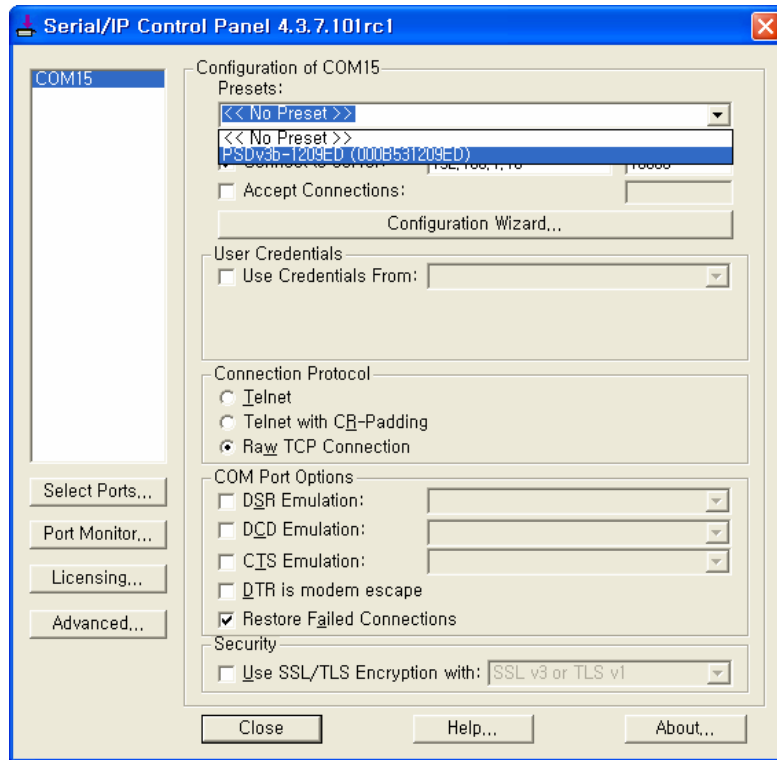
Then Serial/IP Control Panel will appear. Firstly, press 'Select Ports...' to add virtual COM ports. Select as many COM ports as you need. (i.e., as many as Promi-SDs you registered)



Added COM port (COM15) will appear on the list. Click COM port and select preset from Presets, which are named after Promi-SD, for each COM port. In this way, Promi-SD is tied to



new COM port.



Install Promi-SD to your serial equipment and open COM port in terminal software such as Hyperterminal or your legacy serial application.