

Quick Start Guide

LS100W

HelloDevice Lite Series



Pin-out & Cabling

	Pin	Signal
RS232 DB9 Pin-out	1	-
	2	RxD
	3	TxD
	4	DTR
	5	GND
	6	DSR
	7	RTS
	8	CTS
	9	-

DB9 Male serial port pin-out for configuration and serial data communication

LS100W		Serial Device
3	TxD	RxD 2
2	RxD	TxD 3
7	RTS	CTS 8
8	CTS	RTS 7
4	DTR	DSR 6
6	DSR	DTR 4
5	GND	GND 5

User can use serial data cable included in the product package for connecting host PC or serial device.

Connection

① Connect Power



② Connect Wireless LAN network

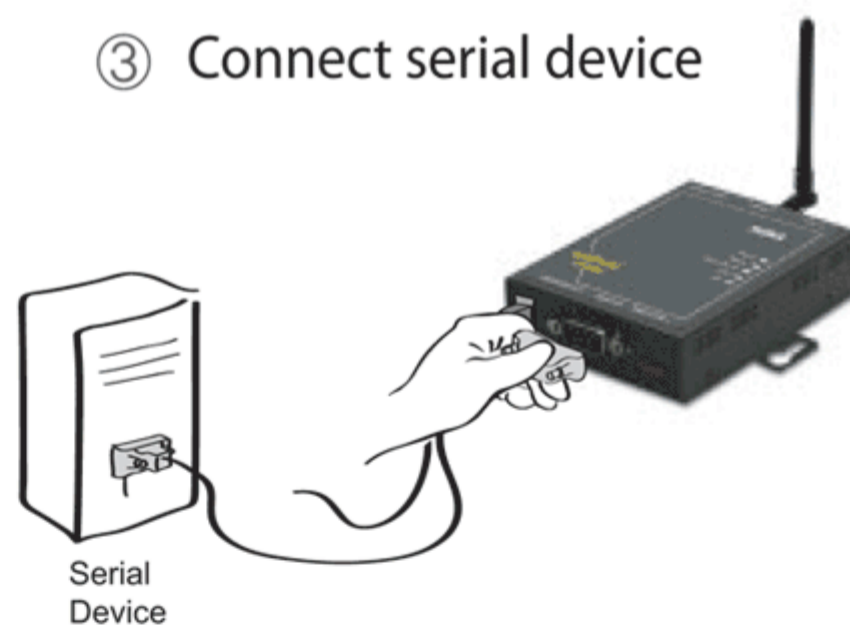
Users must make sure that Wireless LAN access point (AP) is installed.

The factory default SSID is "Default". Users should configure proper SSID to LS100W.

When powered up, LS100W automatically connects to the AP with the pre-configured SSID.

For more details, refer to the User Manual from CD or Sena web site at www.sena.com

③ Connect serial device



Configuration

User can choose one of the following processes

Default Log-in ID/Password is admin / admin.

1. Configuration using the Hyper terminal or Telnet

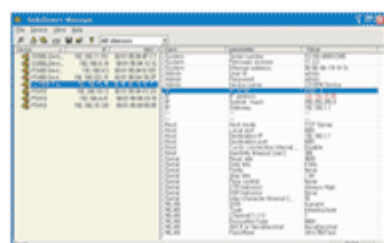


Connect to host PC. Then, slide Data/Console switch to the Console side.

Set up the serial configuration parameters of the terminal emulation program as follows:

9600 Baud rate / 8 Data bits / None Parity / 1 Stop bits / No Hardware flow control

2. Configuration using the HelloDevice manager



HelloDevice Manager and User Manual are available for download from CD or Sena website at <http://www.sena.com/support/downloads/>.

For more information, refer to the user manual.

Visit us at www.sena.com

Copyright 1998-2005, Sena Technologies, Inc. All rights reserved.