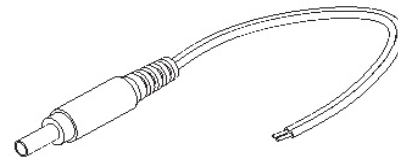


# Quick Start Guide

## Parani10 Bluetooth Serial Adapter



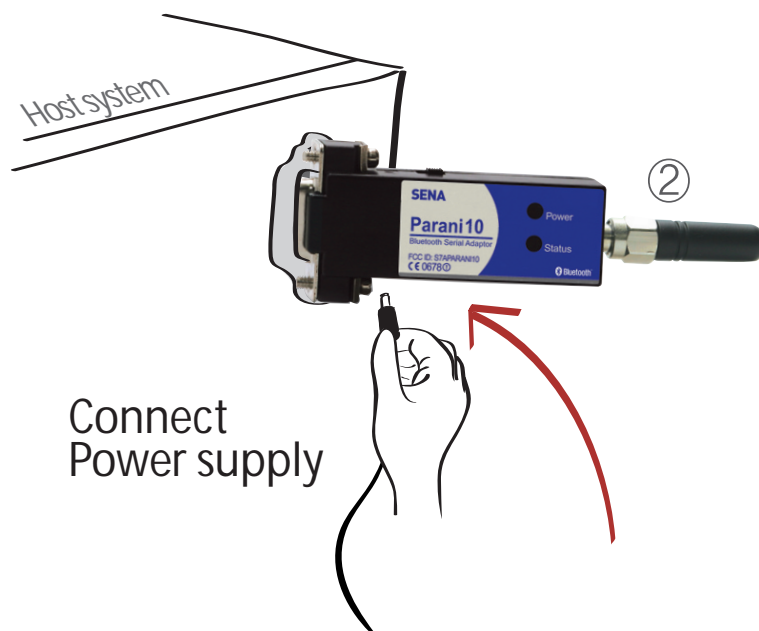
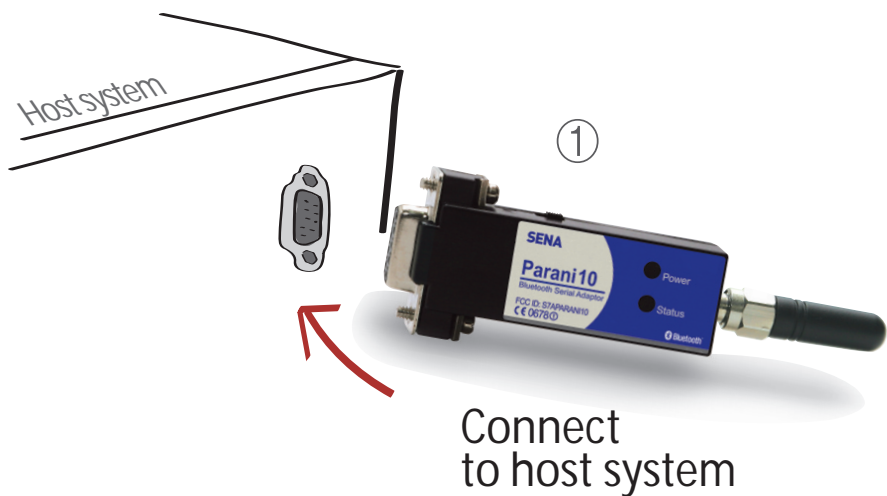
### Pinout & Cabling

	Pin	Signal	Direction
RS232 DB9 Pinout	1	CD	Output
	2	TxD	Output
	3	RxD	Input
	4	DSR	Input
	5	GND	-
	6	DTR	Output
	7	CTS	Input
	8	RTS	Output
	9	Vcc	Input

Parani10 is designed to operate as DCE (Data Communications Equipment). To connect to DTE (Data Terminal Equipment), for example a PC or a laptop, a straight cable must be used as in below.

Parani10		Host	
1	CD	-----	CD 1
2	TxD	-----	RxD 2
3	RxD	-----	TxD 3
4	DSR	-----	DTR 4
5	GND	-----	GND 5
6	DTR	-----	DSR 6
7	CTS	-----	RTS 7
8	RTS	-----	CTS 8

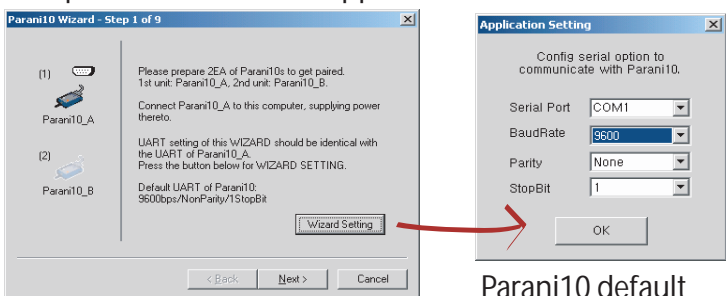
### Connection



### Configuration

#### I. Configuration using the Parani10 wizard

Parani10 wizard is used for simple configuration of point-to-point communications. Download the Parani10 wizard from Sena website at <http://www.sena.com/support/downloads/>



Follow the steps in the Parani10 wizard

Parani10 default configuration is 9600 bps Baud, 8 Data bit, No Parity, 1 Stop bit and H/W flow control.

#### II. Configuration using the Parani10 manager or Hyper terminal program

- Parani10 Manager and User Manual are available for download from Sena website at <http://www.sena.com/support/downloads/>

For more information, refer to the user manual.

Visit us at [www.sena.com](http://www.sena.com)

Copyright 1998-2005, Sena Technologies, Inc. All rights reserved.