

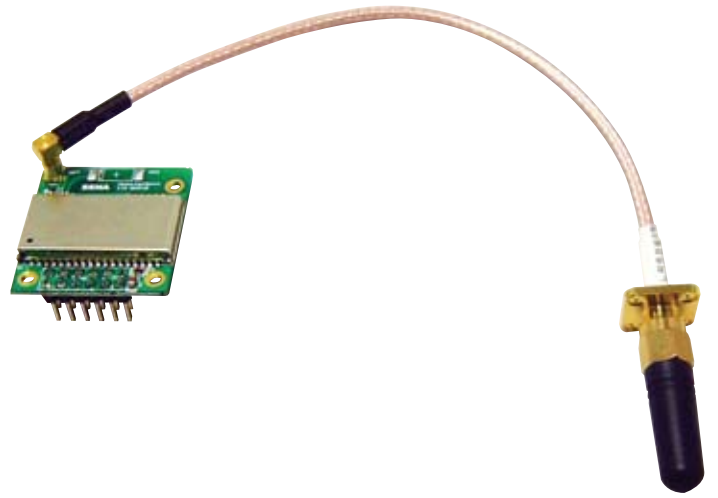
# Quick Start Guide

## Parani™ ESD110V2

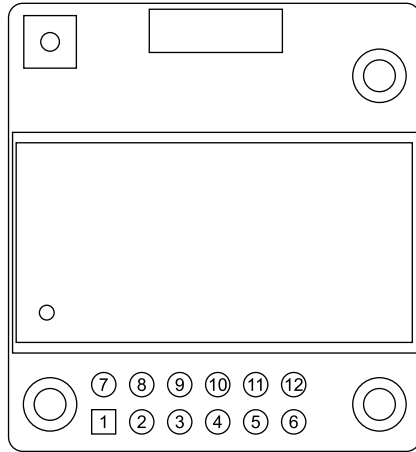
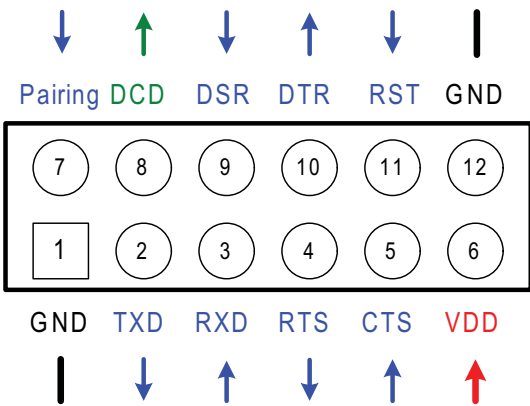
OEM Bluetooth-Serial Module



# SENA



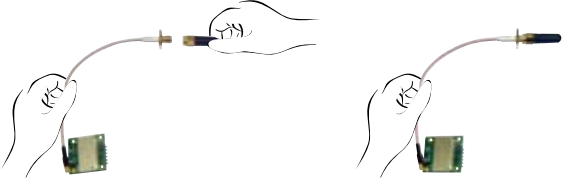
### Pinout & Cabling



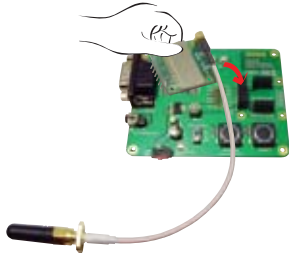
Pin #	Signal	Direction	Description	Signal Level
1	GND	-	Power Ground	Ground
2	TxD	Output	UART Data Output	TTL
3	RxD	Input	UART Data Input	TTL
4	RTS	Output	UART Ready to Send	TTL
5	CTS	Input	UART Clear to Send	TTL
6	VDD	Input	DC Input (3.0~3.3V)	Power
7	Pairing	Input	Pairing Input (Active Low)	TTL
8	DCD	Output	Bluetooth Connect Detect (Active Low)	TTL
9	DSR	Input	Data Set Ready	TTL
10	DTR	Output	Data Terminal Ready	TTL
11	RST	Input	Reset (Active Low)	TTL
12	GND	-	Power Ground	Ground

### Connection

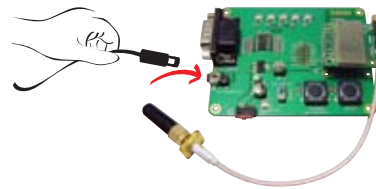
① Connect the default (stub) antenna to the ESD110V2



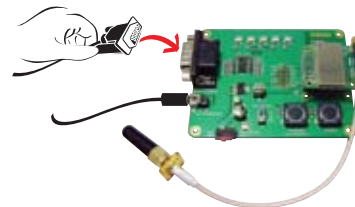
② Connect the ESD110V2 to the Development Board



③ Connect the power to the Development Board



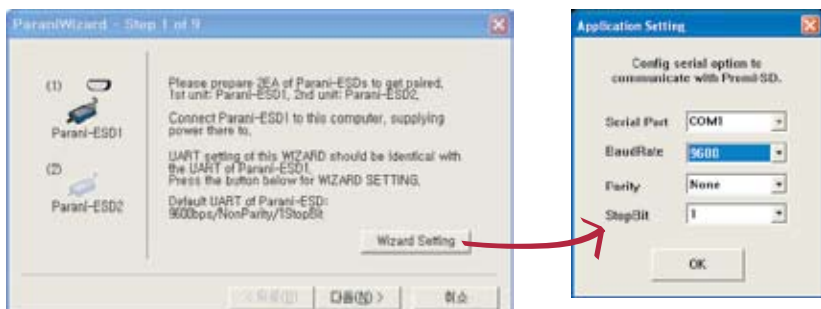
④ Connect the serial cable to the Development Board



### Configuration

#### I. Configuration using the ParaniWizard

ParaniWizard is used for simple configuration of point-to-point communications between two Parani-ESD units.



Follow the steps in the ParaniWizard

Parani-ESD Series default configuration is 9600 bps Baud rate, 8 Data bits, No Parity, 1 Stop bit and H/W flow control

#### II. Configuration using the ParaniWin or Hyper terminal program

Using ParaniWin or Hyper terminal program, user can make pairing in any of the following situations.

- Between two Parani-ESD units.
- Between a Parani-ESD unit and other Bluetooth device.

For connecting to other Bluetooth device, configuration mode must be set to "Mode 3(Connectable and Discoverable)".

For more information, refer to the User Manual. You may download the ParaniWin and User Manual from Sena website at <http://www.senaindustrial.co.kr/support/downloads/>

Visit us at [www.senaindustrial.co.kr](http://www.senaindustrial.co.kr)

Copyright 1998-2012, Sena Technologies, Inc. All rights reserved.