

Quick Start Guide

PS110

HelloDevice Pro Series

SENA
www.sena.com



Set DIP Switch & Pin-outs



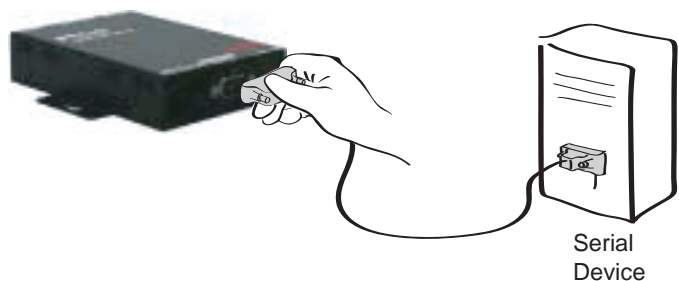
Set serial DIP switch according to your serial device requirements(RS-232/422/485)

DIP Switch Setting	ON	ON	ON
	1 2 3	1 2 3	1 2 3
	RS-232 Mode	RS-422/485 Full Mode	RS-485 Half Mode
DB-9 Pinouts	RS232 (console and serial ports)	RS422 (serial ports only)	RS485 (serial ports only)
1	DCD	Tx+	Tx+
2	Rx	RX+	RX+
3	Tx	RTS+	-
4	DTR	CTS+	-
5	GND	GND	GND
6	DSR	TX-	TX-
7	RTS	RTS-	-
8	CTS	RX-	RX-
9	-	CTS-	-

* Please note that the power of the Pro Series should be turned off before changing the serial communication type.

Connection

① Connect serial device



② Connect Ethernet cable



③ Connect Power supply

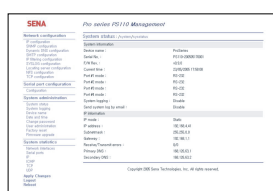
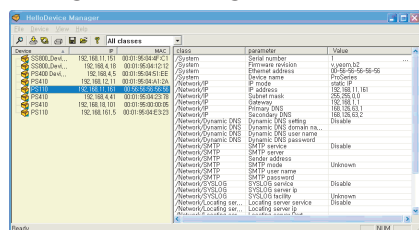


Configuration

User can choose one of the following processes

1. Configuration using the HelloDevice manager

3. Configuration using the Web

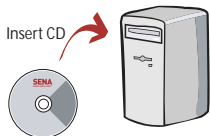


2. Configuration using the Hyper terminal or Telnet



Connect to host PC. Then, slide Data/Console switch to the Console side.

Set up the serial configuration parameters of the terminal emulation program as follows:
9600 Baud rate/8 Data bits/None Parity/
1 Stop bits/No Hardware flow control



HelloDevice Manager and User Manual are available for download from CD or Sena website at <http://www.sena.com/support/downloads/>.

For more information, refer to the user manual.

Visit us at www.sena.com

Copyright 1998-2005, Sena Technologies, Inc. All rights reserved.

Quick Start Guide

PS410

HelloDevice Pro Series



Set DIP Switch & Pin-outs



Set serial DIP switch according to your serial device requirements(RS-232/422/485)

DIP Switch Setting	ON	ON	ON
	1 2 3	1 2 3	1 2 3
	RS-232 Mode	RS-422/485 Full Mode	RS-485 Half Mode
DB-9 Pinouts	RS232 (console and serial ports)	RS422 (serial ports only)	RS485 (serial ports only)
1	DCD	Tx+	Tx+
2	Rx	RX+	RX+
3	Tx	RTS+	-
4	DTR	CTS+	-
5	GND	GND	GND
6	DSR	TX-	TX-
7	RTS	RTS-	-
8	CTS	RX-	RX-
9	-	CTS-	-

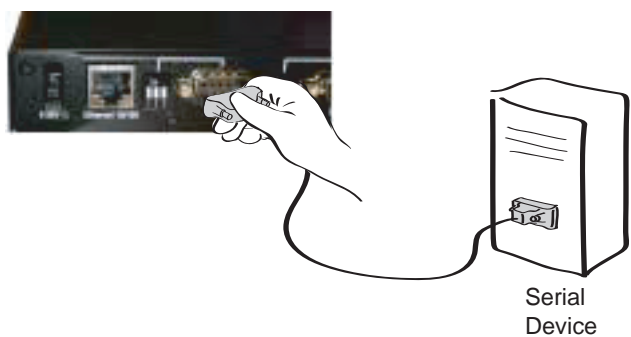
* Please note that the power of the Pro Series should be turned off before changing the serial communication type.

Connection

① Connect serial device

② Connect Ethernet cable

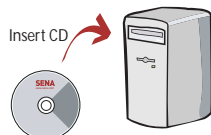
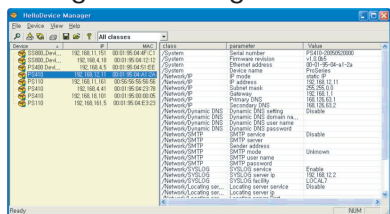
③ Connect Power supply



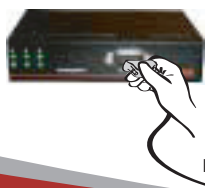
Configuration

User can choose one of the following processes

1. Configuration using the HelloDevice manager
2. Configuration using the Hyper terminal or Telnet
3. Configuration using the Web



2. Configuration using the Hyper terminal or Telnet



Connect the host PC and PS410's console port using a serial console cable.
Set up the serial configuration parameters of the terminal emulation program as follows:
9600 Baud rate/8 Data bits/None Parity/
1 Stop bits/No Hardware flow control

HelloDevice Manager and User Manual are available for download from CD or Sena website at <http://www.sena.com/support/downloads/>.

For more information, refer to the user manual.

Visit us at www.sena.com

Copyright 1998-2005, Sena Technologies, Inc. All rights reserved.

Quick Start Guide

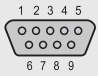
PS810

HelloDevice Pro Series



SENA
www.sena.com

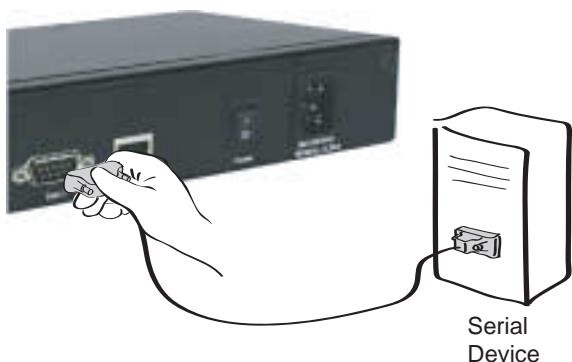
Pin-outs

		RS232 (console and serial ports)	RS422 (serial ports only)	RS485 (serial ports only)
DB-9 Pinouts	1	DCD	Tx+	Tx+
	2	Rx	RX+	RX+
	3	Tx	RTS+	-
	4	DTR	CTS+	-
	5	GND	GND	GND
	6	DSR	TX-	TX-
	7	RTS	RTS-	-
	8	CTS	RX	RX-
	9	-	CTS-	-

* User can change the serial communication type using software such as hyper terminal, telnet or web management interface.

Connection

① Connect serial device



② Connect Ethernet cable



③ Connect Power cord

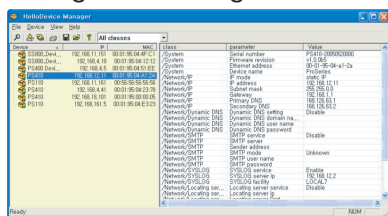


Configuration

User can choose one of the following processes

1. Configuration using the HelloDevice manager

3. Configuration using the Web

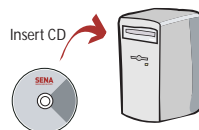


2. Configuration using the Hyper terminal or Telnet



Connect the host PC and PS810's console port using a serial console cable.

Set up the serial configuration parameters of the terminal emulation program as follows:
9600 Baud rate/8 Data bits/None Parity/
1 Stop bits/No Hardware flow control



HelloDevice Manager and User Manual are available for download from CD or Sena website at <http://www.sena.com/support/downloads/>

For more information, refer to the user manual.

Visit us at www.sena.com

Copyright 1998-2005, Sena Technologies, Inc. All rights reserved.