

5. Configuration using a telnet

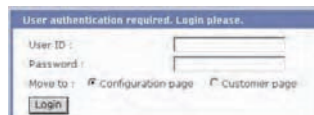
1) Telnet to the Super Series using the factory default IP address.
telnet 192.168.161.5

2) Follow the same procedure as **2. Configuration using a console**, in the log-in, the parameter configuration and the port test, since the user interface of the Telnet is identical to that of the console.

6. Configuration using a web browser

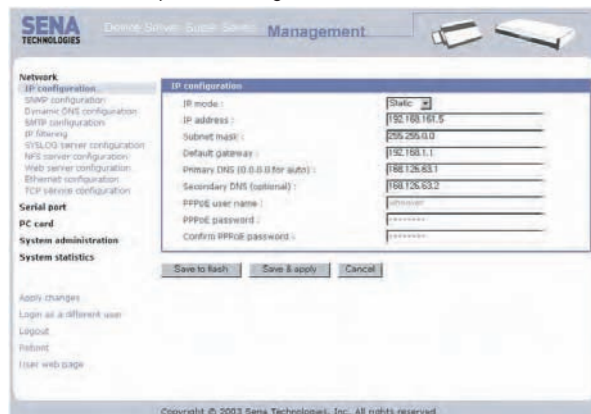
The Super Series provides easy-to-use web interface for the configuration and the port access.

1) Open a web browser such as Internet Explorer or Netscape Navigator and enter the IP address of the Super Series in the url. The log-in page will be shown as follows.



2) Enter the **admin:admin** as a User ID and a password, and then click the [Login] button.

3) The Super Series configuration page will be shown with left-hand menu bar and the workspace on the right.



4) Select the menu, [**Network -- IP Configuration**] to perform the IP Configuration.

After completing the configuration, click [**Save & apply**] button on the workspace to reflect the updated setting to the system. Refer to 3.1. *IP Configuration* in the Users' Guide for detailed information.

5) Select the menu, [**Serial port -- Configuration**], and then click the port number 1 in the [Individual port configuration] to check the parameters of port 1. After completing the configuration, click [**Save & apply**] button on the workspace to reflect the updated setting to the system. Refer to 4.1. *Individual Port Configuration* in the Users' Guide for details.

All port configuration				
Port#	Title	Host mode	Local port	Serial-settings
All	Port Title	TCP	4000	RS232-9600-N-8-1-No

Individual port configuration				
Port#	Title	Host mode	Local port	Serial-settings
1	Port Title #1	TCP	4000	RS232-9600-N-8-1-No
2	Port Title #2	TCP	4001	RS232-9600-N-8-1-No
3	Port Title #3	UDP	4002	RS232-9600-N-8-1-No
4	Port Title #4	Modem emulation	4003	RS232-9600-N-8-1-No
5	Port Title #5	TCP	4004	RS232-9600-N-8-1-No
6	Port Title #6	TCP	4005	RS232-9600-N-8-1-No
7	Port Title #7	TCP	4006	RS232-9600-N-8-1-No
8	Port Title #8	TCP	4007	RS232-9600-N-8-1-No

Contact

U.S. / Canada / South America

Tel : +1 (408) 262-6762 Fax: +1 (408) 907-3738

EU / Africa

Tel : +33 (0) 1 53 53 16 29 Fax: +33 (0) 1 53 53 14 00

Asia / Pacific

Tel : +82-2-571-8283 Fax: +82-2-573-7710

Contact us via E-mail

General Information : info@sena.com
Sales & Distribution : sales@sena.com
Technical Support : support@sena.com

SENA

SENA

U.S. / Canada / South America

Tel : +1 (408) 262-6762 Fax: +1 (408) 907-3738

EU / Africa

Tel : +33 (0) 1 53 53 16 29 Fax: +33 (0) 1 53 53 14 00

Asia / Pacific

Tel : +82-2-571-8283 Fax: +82-2-573-7710

Contact us via E-mail

General Information : info@sena.com
Sales & Distribution : sales@sena.com
Technical Support : support@sena.com

HelloDevice Super series SS100/110/400/800



Quick Start Guide

HelloDevice™

HelloDevice™

1. Connection

1) Hook up the power to the Super Series.

2) Hook up the Console/Ethernet cable to the Ethernet connector of the Super Series with your hub or switch.

3) Confirm that the **Power, Ready** and **Link** LEDs are light up.

4) Hook up the Console/Ethernet cable with RJ45-DB9F adapter into the console port of the Super Series.

5) Connect the other end of the Console/Ethernet cable with RJ45-DB9F adapter to the PC's COM port.

Note: To connect the SS100, do not plug the adapter. The console cable is used as it is. Keep in mind to slide Data/Console switch to the **Console** side when you are using the SS100.

Refer to *Appendix A. Connections* in the Users' Guide for detailed information.

2. Configuration using a console

1) Run a terminal emulation program such as HyperTerminal and set up the serial configuration parameters as follows:

Baud rate = 9600, Data bits = 8, Parity = None, Stop bits = 1, Flow control = None

2) Press **ENTER** key at the terminal emulation program.

3) Enter the user name and password. Factory default setting of the user name and password are admin:admin.

4) Users can change the default configuration of the IP address and the serial port(s) by using the text menu interface for their environment.

Console port pin-out

Pin	SS100 DB9	SS110/400/800 RJ45
1	N.C	CTS
2	RxD	DSR
3	TxD	RxD
4	DTR	GND
5	GND	DCD
6	DSR	TxD
7	RTS	DTR
8	CTS	RTS
9	N.C	

```
192.168.161.5 login: admin
Password:

-----
Welcome to SS-400 configuration page
Current time: 08/26/2003 13:08:29 F/W REV.: v1.0.0
Serial No.: SS4000820-000001ÿÿ MAC address: 00-01-95-a1-89-b7
IP mode: Static IP IP address: 192.168.161.5
-----
Select menu:
1. Network configuration
2. Serial port configuration
3. PC Card configuration
4. System administration
5. Save changes
6. Exit without saving
7. Exit and apply changes
8. Exit and reboot
<Enter> Refresh
-->
```

3. Assign IP address

Factory default IP mode setting of the Super Series is **Static**, and the default IP address is 192.168.161.5.

1) Select menu **1. Network configuration** at the main menu.

```
-----
Network configuration
-----
Select menu:
1. IP configuration
2. SNMP configuration
3. Dynamic DNS configuration
4. SMTP configuration
5. IP filtering configuration
6. SYSLOG configuration
7. NFS configuration
8. Web server configuration
9. Ethernet configuration
10. TCP service configuration
<ESC> Back, <Enter> Refresh
-->
```

2) Select submenu **1. IP configuration** at the **Network configuration** menu.

```
-----
Network configuration --> IP configuration
-----
Select menu:
1. IP mode: DHCP
2. Primary DNS: 168.126.63.1
3. Secondary DNS: 168.126.63.2
<ESC> Back, <Enter> Refresh
--> 1
Select mode:
1. Static IP
2. DHCP
3. PPPoE
--> 1
-----
Network configuration --> IP configuration
-----
Select menu:
1. IP mode: Static IP
2. IP address: 192.168.161.5
3. Subnet mask: 255.255.0.0
4. Default gateway: 192.168.1.1
5. Primary DNS: 168.126.63.1
6. Secondary DNS: 168.126.63.2
<ESC> Back, <Enter> Refresh
-->
```

3) Change the parameters according to your network environment, i.e. **IP address, Subnet mask, Default gateway, DNS server**.

4) Return to the main menu by press **ESC** key.

5) Select the menu **7. Exit and apply changes** to save and apply the configuration changes.

4. Serial port(s) configuration

1) Select the menu **2, Serial port configuration** at the main menu.

```
-----
Serial port configuration
-----
Port# Title          Mode Local-Port Serial-Settings
-----
1. Port #1          TCP   6001    RS232-9600-N-8-1-None
2. Port #2          TCP   6002    RS232-9600-N-8-1-None
3. Port #3          TCP   6003    RS232-9600-N-8-1-None
4. Port #4          TCP   6004    RS232-9600-N-8-1-None
-----
Enter port number to configure (0 for all port configuration)
-->
```

2) Select a **Port number** to configure at the **Serial port configuration**.

3) Select the submenu **3. Host mode configuration**, and set up the host mode parameters according to your application.

4) Select the submenu **5, UART configuration**, and set up the parameters as same as those of your serial device.

5) Return to the main menu by press **ESC** key.

6) Select the menu **7. Exit and apply changes** to save and apply the configuration changes.

```
-----
Serial port configuration - Port #1
-----
Select menu:
1. Enable/Disable this port: Enabled
2. Port title: Port #1
3. Host mode configuration
4. Filter application
5. Serial port parameters
6. Modem configuration
7. Port logging configuration
8. Port event handling configuration
9. Apply all port settings: Yes
<ESC> Back, <Enter> Refresh
-->
```