

## 5. Configuration using a telnet

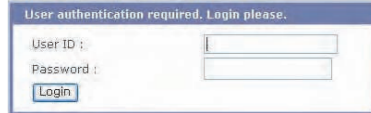
1) Telnet to the STS800/1600 using the factory default IP address.  
telnet 192.168.161.5

2) Follow the same procedure as **2. Configuration using a console**, in the log-in, the parameter configuration and the port test, since the user interface of the Telnet is identical to that of the console.

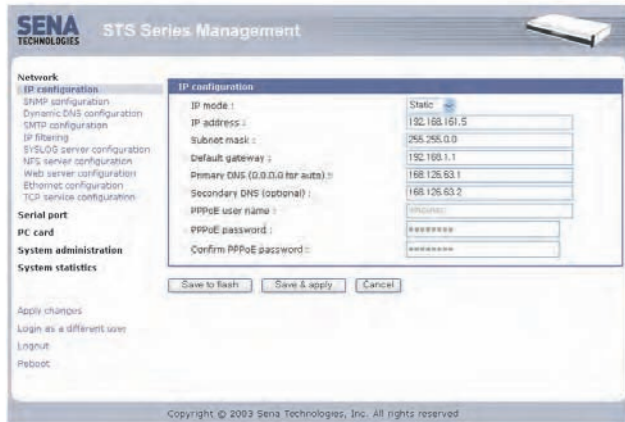
## 6. Configuration using a web browser

The STS800/1600 provides easy-to-use web interface for the configuration and the port access.

1) Open a web browser such as Internet Explorer or Netscape Navigator and enter the IP address of the STS800/1600 in the url.  
The log-in page will be shown as follows.



2) Enter the **admin:admin** as a User ID and a password, and then click the [Login] button.  
3) The STS800/1600 configuration page will be shown with left-hand menu bar and the workspace on the right.



4) Select the menu, [**Network -- IP Configuration**] to perform the IP Configuration.

After completing the configuration, click [**Save To Flash**] button on the workspace, and then [**Apply changes**] menu to reflect the updated setting to the system. Refer to 3.1. *IP Configuration* in the Users' Guide for detailed information.

5) Select the menu, [**Serial port -- Configuration**], and then click the port number 1 in the [Individual port configuration] to check the parameters of port 1. After checking the configuration, click [**Save To Flash**] button on the workspace, and then [**Apply changes**] menu to reflect the updated setting to the system. Refer to 4.1. *Individual Port Configuration* in the Users' Guide for details.

Serial port configuration				
All port configuration				
Port#	Title	Host mode	Local port	Serial-settings
All	Port Title	TCP	6000	RS232-9600-N-8-1-Ne
Individual port configuration				
Port#	Title	Host mode	Local port	Serial-settings
1	Port Title #1	TCPs	6000	RS232-9600-N-8-1-Ne
2	Port Title #2	TCP	6001	RS232-9600-N-8-1-Ne
3	Port Title #3	UDP	6002	RS232-9600-N-8-1-Ne
4	Port Title #4	Modem emulation	6003	RS232-9600-N-8-1-Ne
5	Port Title #5	TCP	6004	RS232-9600-N-8-1-Ne
6	Port Title #6	TCP	6005	RS232-9600-N-8-1-Ne
7	Port Title #7	TCP	6006	RS232-9600-N-8-1-Ne
8	Port Title #8	TCP	6007	RS232-9600-N-8-1-Ne

## Contact

**U.S. / Canada / South America**  
Tel: +1 (408) 262-6762 Fax: +1 (408) 907-3738

**EU / Africa**  
Tel: +33 (0) 1 53 53 16 29 Fax: +33 (0) 1 53 53 14 00

**Asia / Pacific**  
Tel: +82-2-571-8283 Fax: +82-2-573-7710

**Contact us via E-mail**  
General Information : info@sena.com  
Sales & Distribution : sales@sena.com  
Technical Support : support@sena.com

**SENA**  
TECHNOLOGIES

**SENA**  
TECHNOLOGIES

**U.S. / Canada / South America**  
Tel: +1 (408) 262-6762 Fax: +1 (408) 907-3738

**EU / Africa**  
Tel: +33 (0) 1 53 53 16 29 Fax: +33 (0) 1 53 53 14 00

**Asia / Pacific**  
Tel: +82-2-571-8283 Fax: +82-2-573-7710

**Contact us via E-mail**  
General Information : info@sena.com  
Sales & Distribution : sales@sena.com  
Technical Support : support@sena.com

## STS Series Secure Terminal Server STS800/1600



## Quick Start Guide

STS Series

STS Series

## 1. Connection

1) Hook up the power to the STS800/1600.

2) Hook up the Console/Ethernet cable to the Ethernet connector of the STS800/1600 with your hub or switch.

3) Confirm that the **Power, Ready** and **Link LEDs** are light up.

4) Hook up the Console/Ethernet cable with RJ45-DB9F adapter into the console port of the STS800/1600.

5) Connect the other end of the Console/Ethernet cable with RJ45-DB9F adapter to the PC's COM port.

Refer to *Appendix A. Connections* in the Users' Guide for detailed information.

## 2. Configuration using a console

1) Run a terminal emulation program such as HyperTerminal and set up the serial configuration parameters as follows:  
**Baud rate = 9600, Data bits = 8, Parity = None, Stop bits = 1, Flow control = None**

2) Press **ENTER** key at the terminal emulation program.

3) Enter the user name and password. Factory default setting of the user name and password are **admin:admin**.

4) Users can change the default configuration of the IP address and the serial port 1 by using the text menu interface for their environment.

Console port pin-out

Pin	Pin Description
1	CTS
2	DSR
3	RxD
4	GND
5	DCD
6	TxD
7	DTR
8	RTS

```
192.168.161.5 login: admin
Password:

-----
Welcome to STS-800 configuration page
Current time: 08/26/2003 13:08:29 P/W REV.: v1.0.0
Serial No.: STS8000800-000001 MAC address: 00-01-95-a1-89-b7
IP mode: Static IP IP address: 192.168.161.5
-----

Select menu:
1. Network configuration
2. Serial port configuration
3. PC Card configuration
4. System administration
5. Save changes
6. Exit without saving
7. Exit and apply changes
8. Exit and reboot
<Enter> Refresh
-->
```

## 3. Assign IP address

Factory default IP mode setting of the STS800/1600 is **Static**, and the default IP address is 192.168.161.5.

1) Select menu **1. Network configuration** at the main menu.

```
-----
Network configuration
-----

Select menu:
1. IP configuration
2. SNMP configuration
3. Dynamic DNS configuration
4. SMTP configuration
5. IP filtering configuration
6. SYSLOG configuration
7. NFS configuration
8. Web server configuration
9. Ethernet configuration
10. TCP service configuration
<ESC> Back, <Enter> Refresh
-->
```

2) Select submenu **1. IP configuration** at the **Network configuration** menu.

```
-----
Network configuration --> IP configuration
-----

Select menu:
1. IP mode: DHCP
2. Primary DNS: 168.126.63.1
3. Secondary DNS: 168.126.63.2
<ESC> Back, <Enter> Refresh
--> 1

Select mode:
1. Static IP
2. DHCP
3. PPPoE
--> 1

-----
Network configuration --> IP configuration
-----

Select menu:
1. IP mode: Static IP
2. IP address: 192.168.161.5
3. Subnet mask: 255.255.0.0
4. Default gateway: 192.168.1.1
5. Primary DNS: 168.126.63.1
6. Secondary DNS: 168.126.63.2
<ESC> Back, <Enter> Refresh
-->
```

3) Change the parameters according to your network environment, i.e. **IP address, Subnet mask, Default gateway, DNS server**.

4) Return to the main menu by press **ESC** key.

5) Select the menu **7. Exit and apply changes** to save and apply the configuration changes.

## 4. Serial port(s) configuration

1) Select the menu **2. Serial port configuration** at the main menu.

```
-----
Serial port configuration
-----

Port# Title Mode Local-Port Serial-Settings
1. Port #1 TCP 6001 RS232-9600-N-8-1-None
2. Port #2 TCP 6002 RS232-9600-N-8-1-None
3. Port #3 TCP 6003 RS232-9600-N-8-1-None
4. Port #4 TCP 6004 RS232-9600-N-8-1-None
5. Port #5 TCP 6005 RS232-9600-N-8-1-None
6. Port #6 TCP 6006 RS232-9600-N-8-1-None
7. Port #7 TCP 6007 RS232-9600-N-8-1-None
8. Port #8 TCP 6008 RS232-9600-N-8-1-None

Enter port number to configure (0 for all port configuration)
-->
```

2) Select a **Port number** to configure at the **Serial port configuration**.

3) Select the submenu **3. Host mode configuration**, and set up the host mode parameters according to your application.

4) Select the submenu **5. UART configuration**, and set up the parameters as same as those of your serial device.

5) Return to the main menu by press **ESC** key.

6) Select the menu **7. Exit and apply changes** to save and apply the configuration changes.

```
-----
Serial port configuration - Port #1
-----

Select menu:
1. Enable/Disable this port: Enabled
2. Port title: Port #1
3. Host mode configuration
4. Serial port parameters
5. Modem configuration
6. Port logging configuration
7. Port event handling configuration
8. Apply all port settings: Yes
<ESC> Back, <Enter> Refresh
-->
```

## Quick Start Guide

STS Series

STS Series

STS Series