

**Sena Device Server**

**Serial/IP™**

**Version 1.0.0**

2005. 3. 7.

## Release Note

Revision	Date	Name	Description
V1.0.0	2005-03-7	HJ Jeon	Serial/IP 4.3.2

( )

210

137-130,

: (02) 573-5422

: (02) 573-7710

email: [support@sena.com](mailto:support@sena.com)

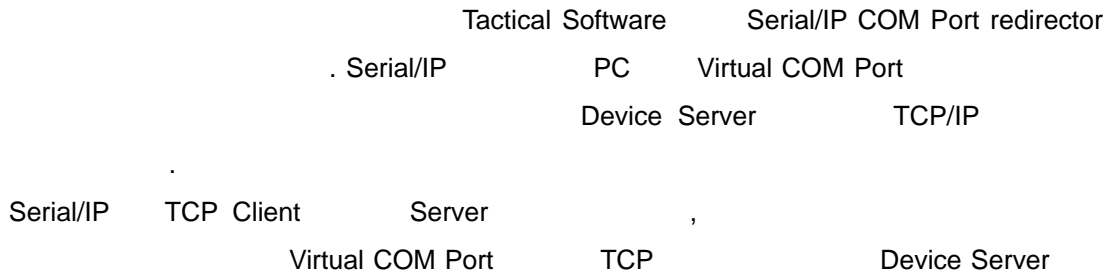
: <http://www.sena.com>

<b>1. Serial/IP .....</b>	<b>5</b>
1.1 .....	5
1.2 .....	5
1.3 .....	6
1.4 .....	7
1.4.1 Client .....	7
1.4.2 Server .....	7
1.4.3 Server & Client .....	7
<b>2. Serial/IP Client .....</b>	<b>8</b>
2.1 RawTCP .....	8
2.1.1 .....	8
2.1.2 Device Server .....	8
2.1.3 Serial/IP .....	8
2.1.4 .....	9
2.2. VirtualCOM .....	11
2.2.1 .....	11
2.2.2 Device Server .....	11
2.2.3 Serial/IP .....	11
2.2.4 .....	12
<b>3. Serial/IP Server .....</b>	<b>13</b>
3.1 RawTCP .....	13
3.1.1 .....	13
3.1.2 Device Server .....	13
3.1.3 Serial/IP .....	13
3.1.4 .....	14
<b>4. SSL .....</b>	<b>15</b>
4.1 SSL .....	15
4.1.1 .....	15
4.1.2 Device Server .....	15
4.1.3 Serial/IP .....	16

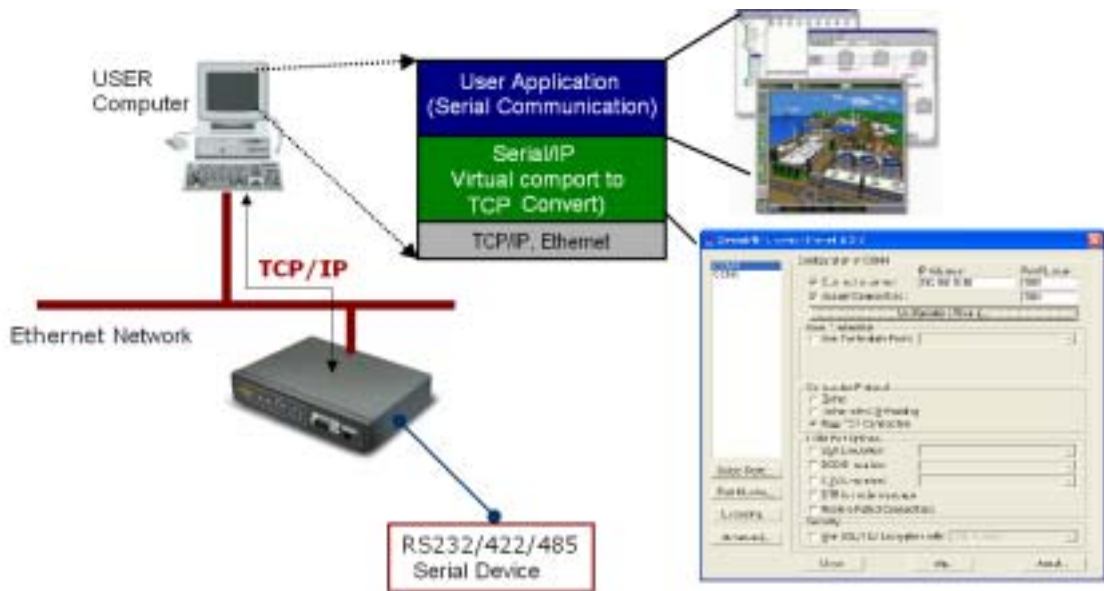
4.1.4	.....	16
4.2	Serial/IP	18
4.2.1	.....	18
4.2.2	Device Server	18
4.2.3	Serial/IP	19
4.2.4	.....	22
<b>5.</b>	.....	<b>23</b>

# 1. Serial/IP

## 1.1

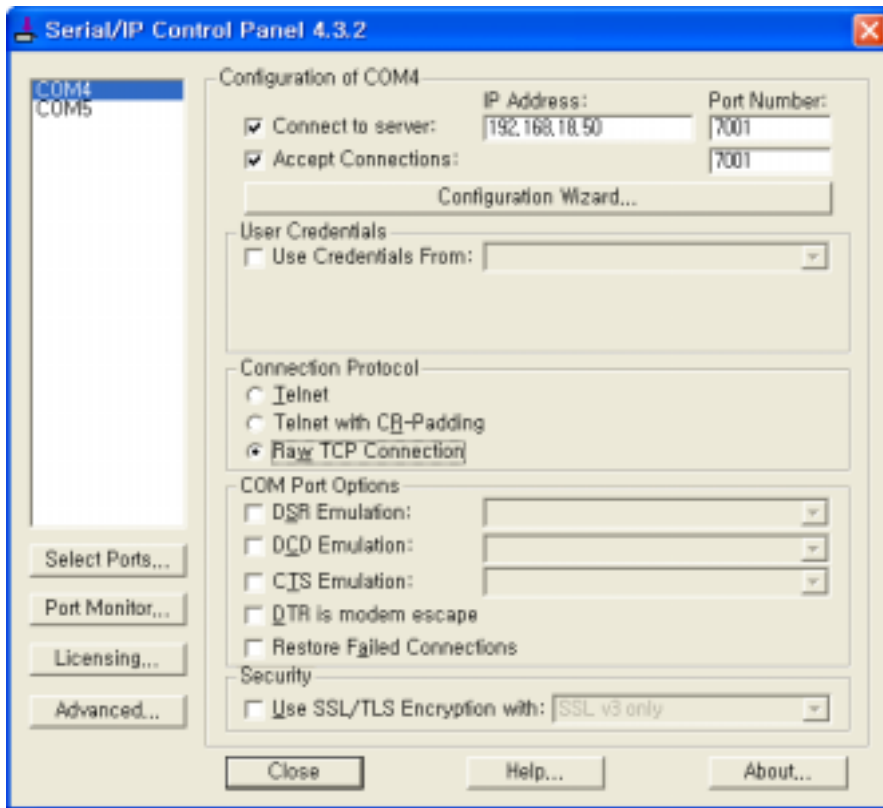


## 1.2



- PC Device Server Ethernet
- PC Serial/IP Virtual COM Port
- Virtual COM Port Open
- Open Virtual COM Port Device Server TCP/IP
- Device Server
- Device Server TCP/IP Serial/IP Virtual COM Port

### 1.3



- Configuration of COM x : Client , Device Server  
IP Address Port
- Accept Connection : Server Listen Port
- Configuration Wizard :
- Connection Protocol : Device Server TCP
- COM port Option :
- Security :
- Select Port : Virtual COM Port
- Port Monitor : Device Server
- Advanced... :

## 1.4

### 1.4.1 Client

Connect to server  
Device Server  
IP Server Port  
가 Virtual COM Port Open Serial/IP Virtual COM Port  
Device Server IP Port TCP

### 1.4.2 Server

Accept connection Listen TCP Port  
가 Virtual COM Port Open Serial/IP Listen Port  
Device Server TCP

### 1.4.3 Server & Client

Connect to server Accept connection  
Device Server IP Server Port Server Listen Port  
가 Virtual COM Port open Device Server  
(Client ) Port  
(Server ).

## 2. Serial/IP Client

### 2.1 RawTCP

TCP/IP

-TCP/IP

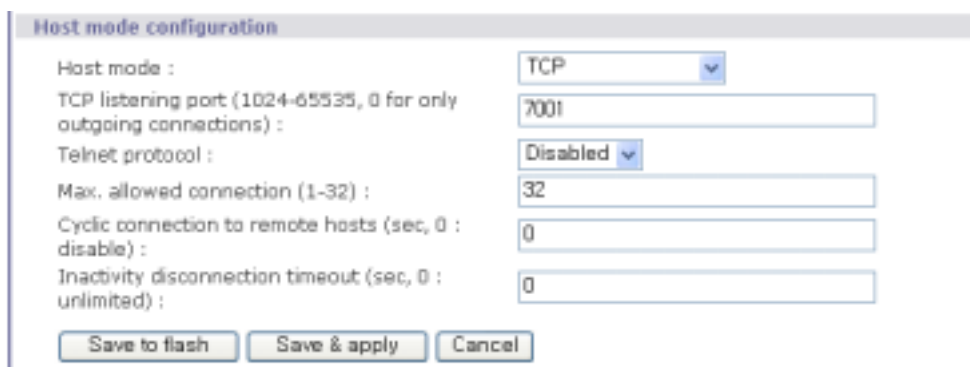
#### 2.1.1

LS, NEMO, PS, SS, STS

Device Server

#### 2.1.2 Device Server

- SS/STS : Server TCP
- : Host = Server ( : Port = 7001)



Host mode configuration

Host mode : TCP

TCP listening port (1024-65535, 0 for only outgoing connections) : 7001

Telnet protocol : Disabled

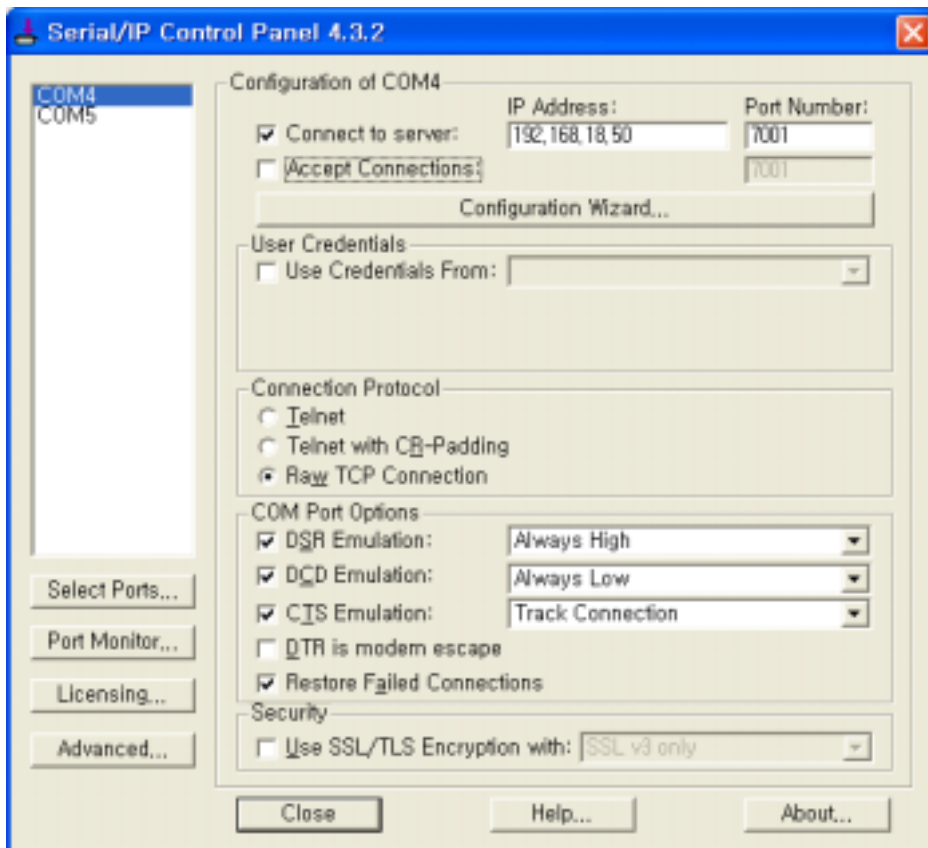
Max. allowed connection (1-32) : 32

Cyclic connection to remote hosts (sec, 0 : disable) : 0

Inactivity disconnection timeout (sec, 0 : unlimited) : 0

Buttons: Save to flash, Save & apply, Cancel

#### 2.1.3 Serial/IP



Serial/IP Control Panel 4.3.2

Configuration of COM4

IP Address: 192.168.18.50 Port Number: 7001

Connect to server: 192.168.18.50 7001

Accept Connections: 7001

Configuration Wizard...

User Credentials

Use Credentials From: [ ]

Connection Protocol

Telnet

Telnet with CB-Padding

Raw TCP Connection

COM Port Options

DSR Emulation: Always High

DCD Emulation: Always Low

CTS Emulation: Track Connection

DTR is modem escape

Restore Failed Connections

Security

Use SSL/TLS Encryption with: SSL v3 only

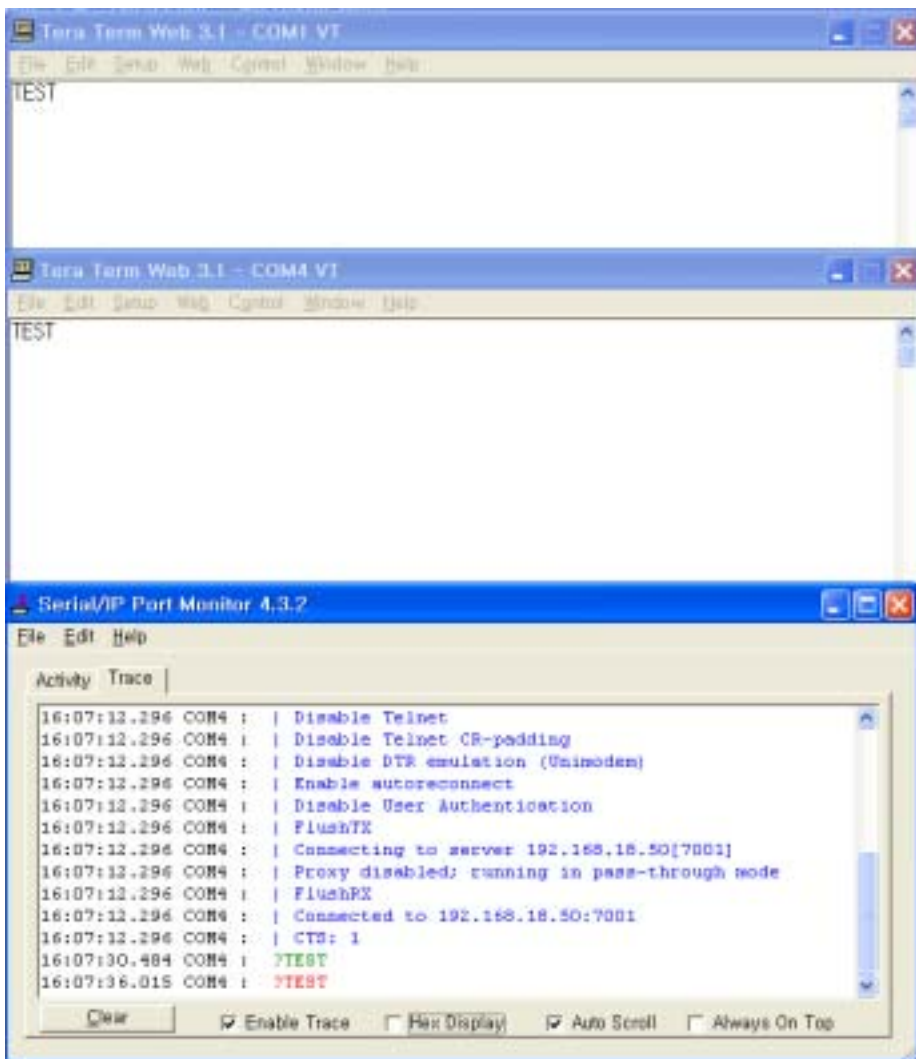
Buttons: Close, Help..., About...



- Connect to server : Device Server IP Port  
(192.168.18.50 : 7001)
- Connection Protocol : RawTCP
- DSR/DCD/CTS Emulation :  
: Always High, Always Low, Track Connection( High)
- Restore Failed Connections : TCP

### 2.1.4

- Virtual COM Port Open Serial/IP Device Server
- [Port Monitor]
- Client PC





## 2.2. VirtualCOM

VirtualCOM

가

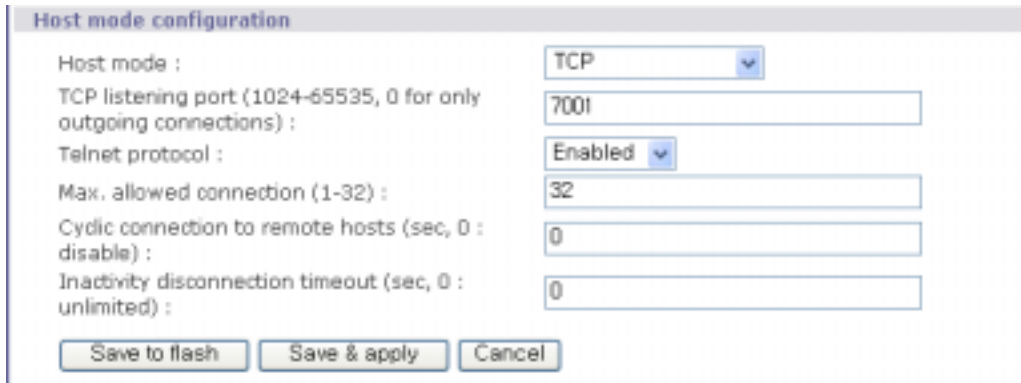
Baud rate , RTS,CTS,DTR,DSR

### 2.2.1

PSx10, SS, STS

Device Server

### 2.2.2 Device Server



- Telnet protocol Enable

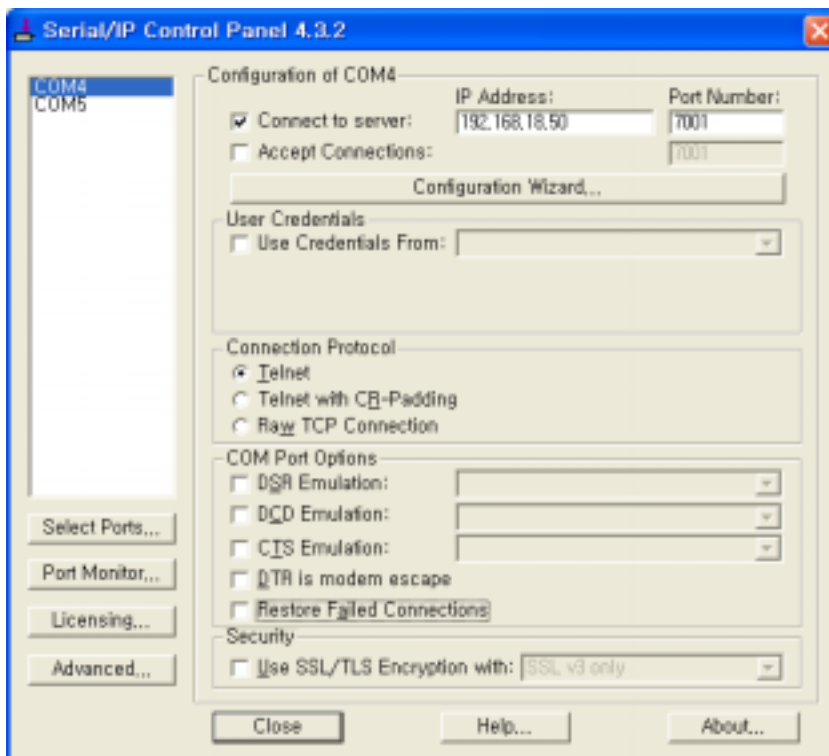
- Device Server

VirtualCOM

Telnet(RFC 854)

COM Port Control protocol (RFC 2217)

### 2.2.3 Serial/IP

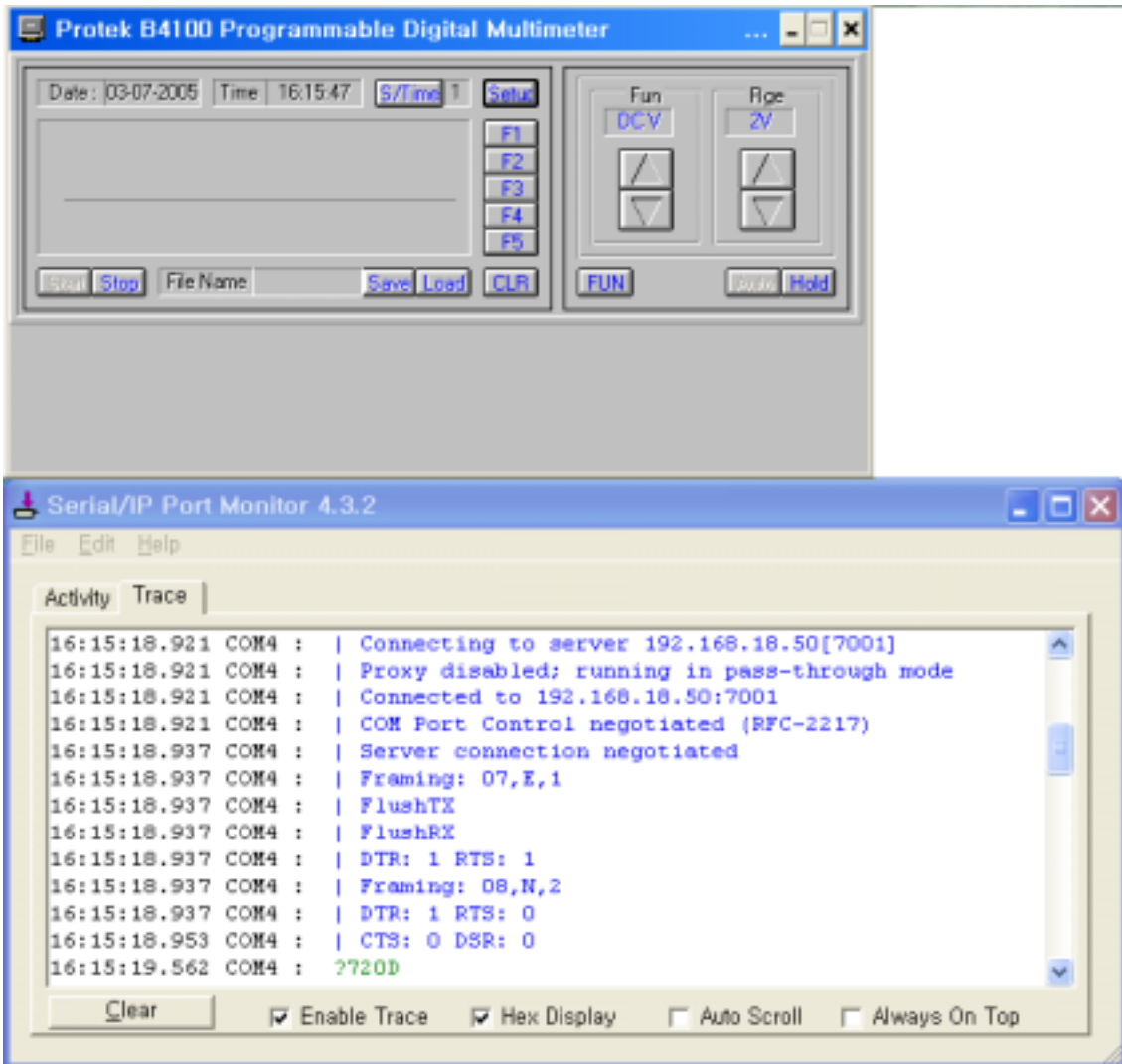


- Connection protocol Telnet

## 2.2.4

Protek COM Port Open RTS Low  
VirtualCOM

가  
가



### 3. Serial/IP Server

#### 3.1 RawTCP

##### 3.1.1

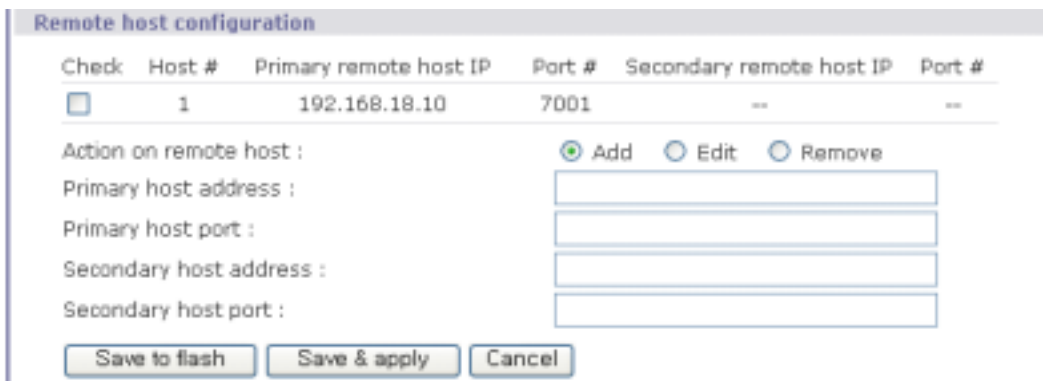
LS, NEMO, PS, SS, STS

Device Server

##### 3.1.2 Device Server

Client (Destination IP, Port -LS/PS ),

Remote Host (SS/STS )



The screenshot shows a dialog box titled "Remote host configuration". It contains a table with columns: Check, Host #, Primary remote host IP, Port #, Secondary remote host IP, and Port #. The first row has a checked box, Host # 1, Primary remote host IP 192.168.18.10, Port # 7001, Secondary remote host IP --, and Port # --. Below the table are radio buttons for "Add", "Edit", and "Remove", with "Add" selected. There are four text input fields for "Primary host address:", "Primary host port:", "Secondary host address:", and "Secondary host port:". At the bottom are three buttons: "Save to flash", "Save & apply", and "Cancel".

Check	Host #	Primary remote host IP	Port #	Secondary remote host IP	Port #
<input checked="" type="checkbox"/>	1	192.168.18.10	7001	--	--

Action on remote host :  Add  Edit  Remove

Primary host address :

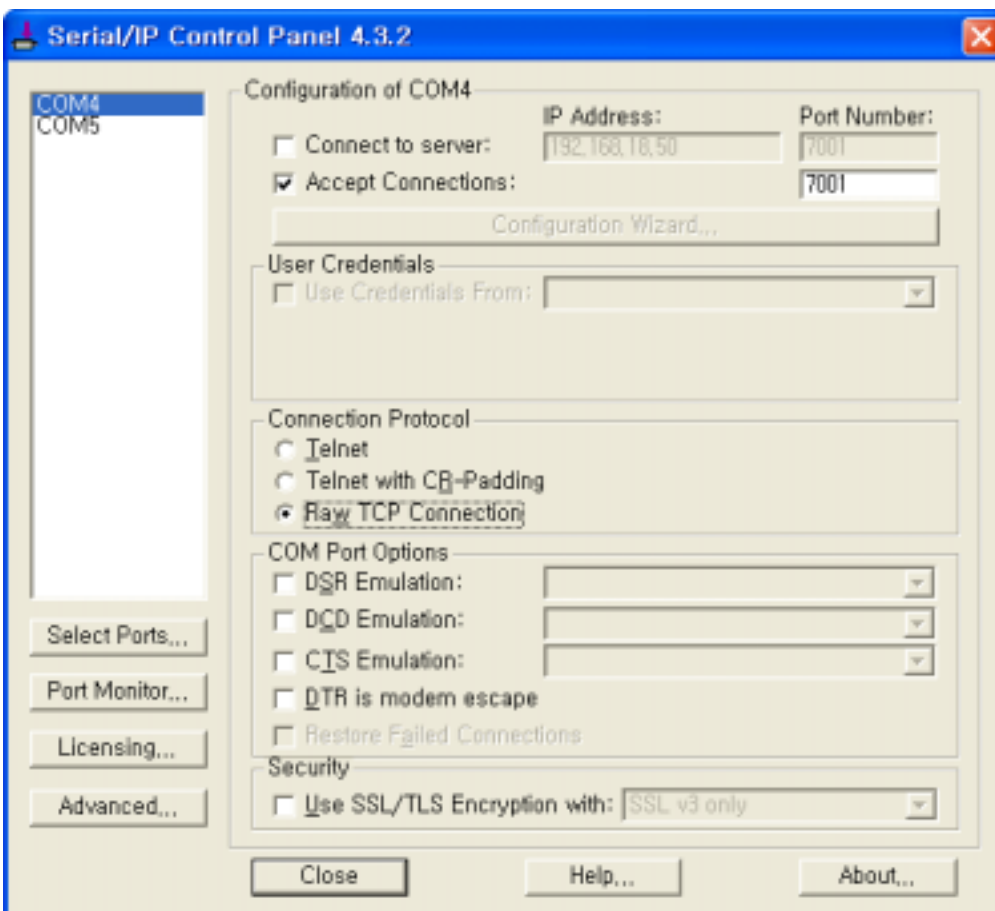
Primary host port :

Secondary host address :

Secondary host port :

Save to flash Save & apply Cancel

##### 3.1.3 Serial/IP



The screenshot shows the "Serial/IP Control Panel 4.3.2" window. On the left is a list of COM ports with "COM4" selected. The main area is titled "Configuration of COM4" and contains several sections: "Connect to server:" with "IP Address:" (192.168.18.50) and "Port Number:" (7001); "Accept Connections:" checked with "Port Number:" (7001); "User Credentials:" with "Use Credentials From:" dropdown; "Connection Protocol:" with radio buttons for "Telnet", "Telnet with CR-Padding", and "Raw TCP Connection" (selected); "COM Port Options:" with checkboxes for "DSR Emulation:", "DCD Emulation:", "CTS Emulation:", "QTR is modem escape", and "Restore Failed Connections"; and "Security:" with "Use SSL/TLS Encryption with:" dropdown (SSL v3 only). At the bottom are "Close", "Help...", and "About..." buttons.

Serial/IP Control Panel 4.3.2

COM4  
COM5

Select Ports...  
Port Monitor...  
Licensing...  
Advanced...

Configuration of COM4

Connect to server: IP Address: 192.168.18.50 Port Number: 7001

Accept Connections: Port Number: 7001

Configuration Wizard...

User Credentials

Use Credentials From: [dropdown]

Connection Protocol

Telnet

Telnet with CR-Padding

Raw TCP Connection

COM Port Options

DSR Emulation: [dropdown]

DCD Emulation: [dropdown]

CTS Emulation: [dropdown]

QTR is modem escape

Restore Failed Connections

Security

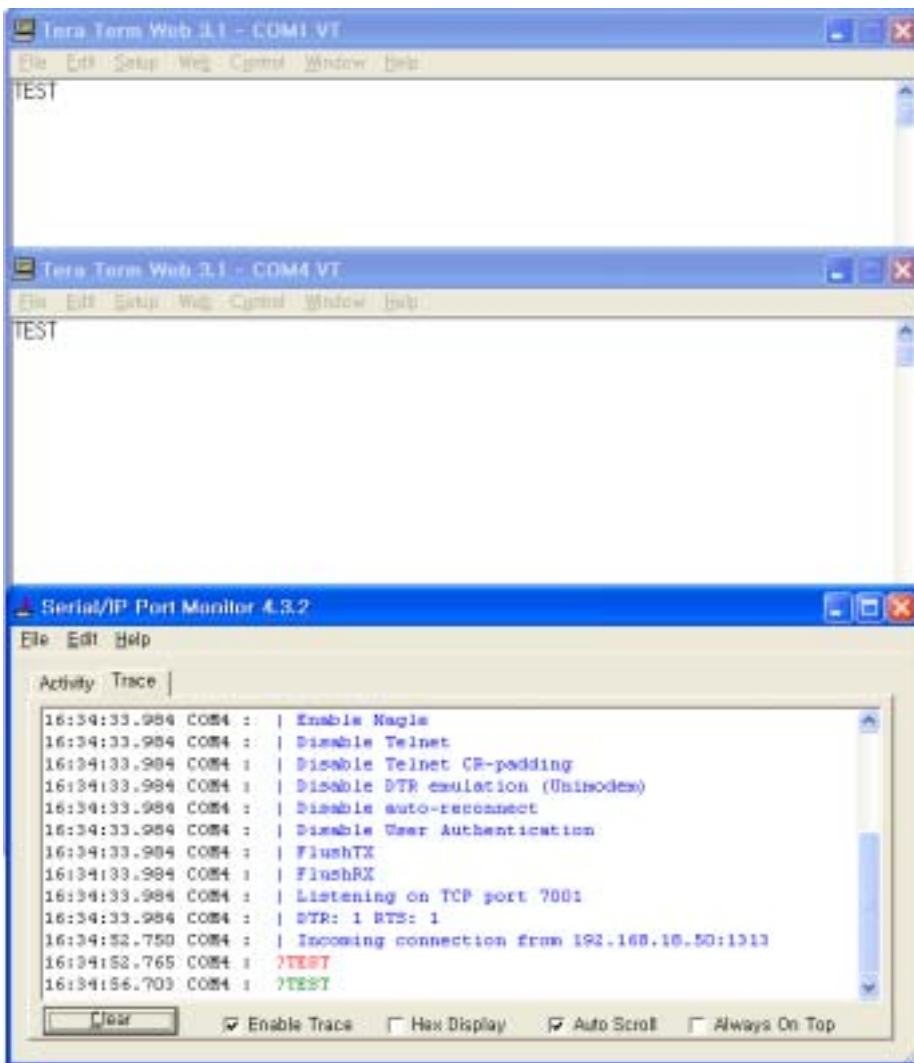
Use SSL/TLS Encryption with: SSL v3 only

Close Help... About...

- Accept connection : Listen TCP Port
- Connection Protocol : RawTCP

### 3.1.4

- Virtual COM Port Serial/IP Listen Port
- Serial/IP Server Device Server  
Device Server IP ( IP)



#### NOTE:

RawTCP .( SS STS RFC2217 Client .)

## 4. SSL

Device Server

Serial/IP

SSL/TLS

### 4.1

### SSL

#### 4.1.1

PSx10, SS, STS

Device Server

#### 4.1.2

#### Device Server

Cryptography configuration

Encryption method : SSLv3

Enable/Disable cipher suites :

- SSL\_DHE\_DSS\_WITH\_RC4\_128\_SHA
- SSL\_DHE\_DSS\_EXPORT1024\_WITH\_RC4\_56\_SHA
- SSL\_RSA\_EXPORT1024\_WITH\_RC4\_56\_SHA
- SSL\_DHE\_DSS\_EXPORT1024\_WITH\_DES\_CBC\_SHA
- SSL\_RSA\_EXPORT1024\_WITH\_RC4\_56\_MD5
- SSL\_DHE\_RSA\_WITH\_3DES\_CBC\_SHA
- SSL\_DHE\_RSA\_WITH\_DES\_CBC\_SHA
- SSL\_DHE\_RSA\_EXPORT\_WITH\_DES40\_CBC\_SHA
- SSL\_DHE\_DSS\_WITH\_3DES\_CBC\_SHA
- SSL\_DHE\_DSS\_WITH\_DES\_CBC\_SHA
- SSL\_DHE\_DSS\_EXPORT\_WITH\_DES40\_CBC\_SHA
- SSL\_RSA\_WITH\_3DES\_CBC\_SHA
- SSL\_RSA\_WITH\_DES\_CBC\_SHA
- SSL\_RSA\_EXPORT\_WITH\_DES40\_CBC\_SHA
- SSL\_RSA\_WITH\_IDEA\_CBC\_SHA
- SSL\_RSA\_EXPORT\_WITH\_RC2\_CBC\_40\_MD5
- SSL\_RSA\_WITH\_RC4\_SHA
- SSL\_RSA\_WITH\_RC4\_MD5
- SSL\_RSA\_EXPORT\_WITH\_RC4\_40\_MD5
- SSL\_DH\_anon\_WITH\_3DES\_CBC\_SHA
- SSL\_DH\_anon\_WITH\_DES\_CBC\_SHA
- SSL\_DH\_anon\_EXPORT\_WITH\_DES\_CBC\_SHA
- SSL\_DH\_anon\_WITH\_RC4\_128\_MD5
- SSL\_DH\_anon\_EXPORT\_WITH\_RC4\_40\_MD5
- SSL\_RSA\_WITH\_NULL\_SHA
- SSL\_RSA\_WITH\_NULL\_MD5

Verify client (server mode only) : NO

Verify certificate chain depth : 3

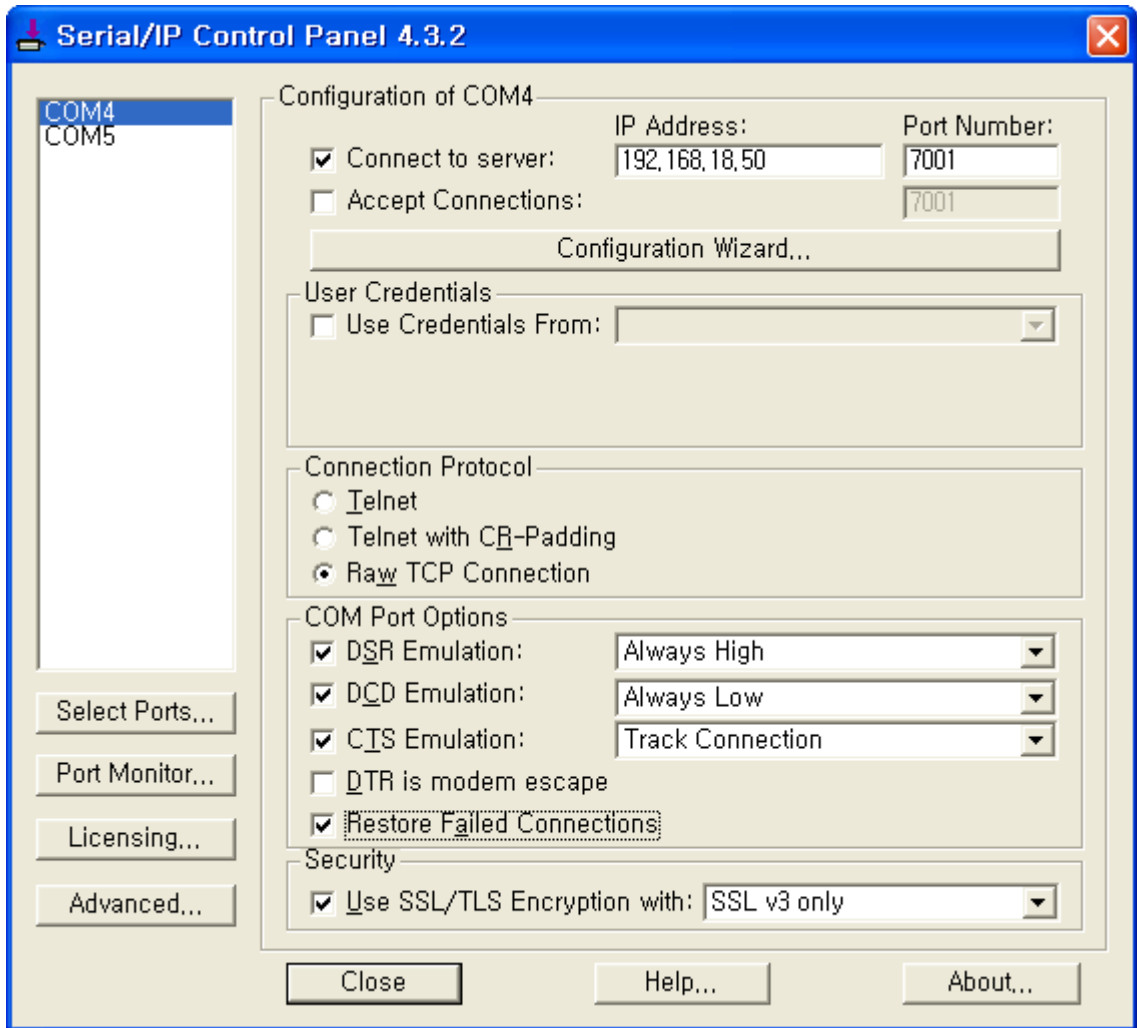
Check the certificate CN : NO

Save to flash Save & apply Cancel

- SS,STS SSLv2, SSLv3, SSLv3 rollback to v2, TLSv1, 3DES, RC4 Encryption method

- Encryption method SSLv3 rollback to v2, SSLv3, TLSv1

### 4.1.3 Serial/IP

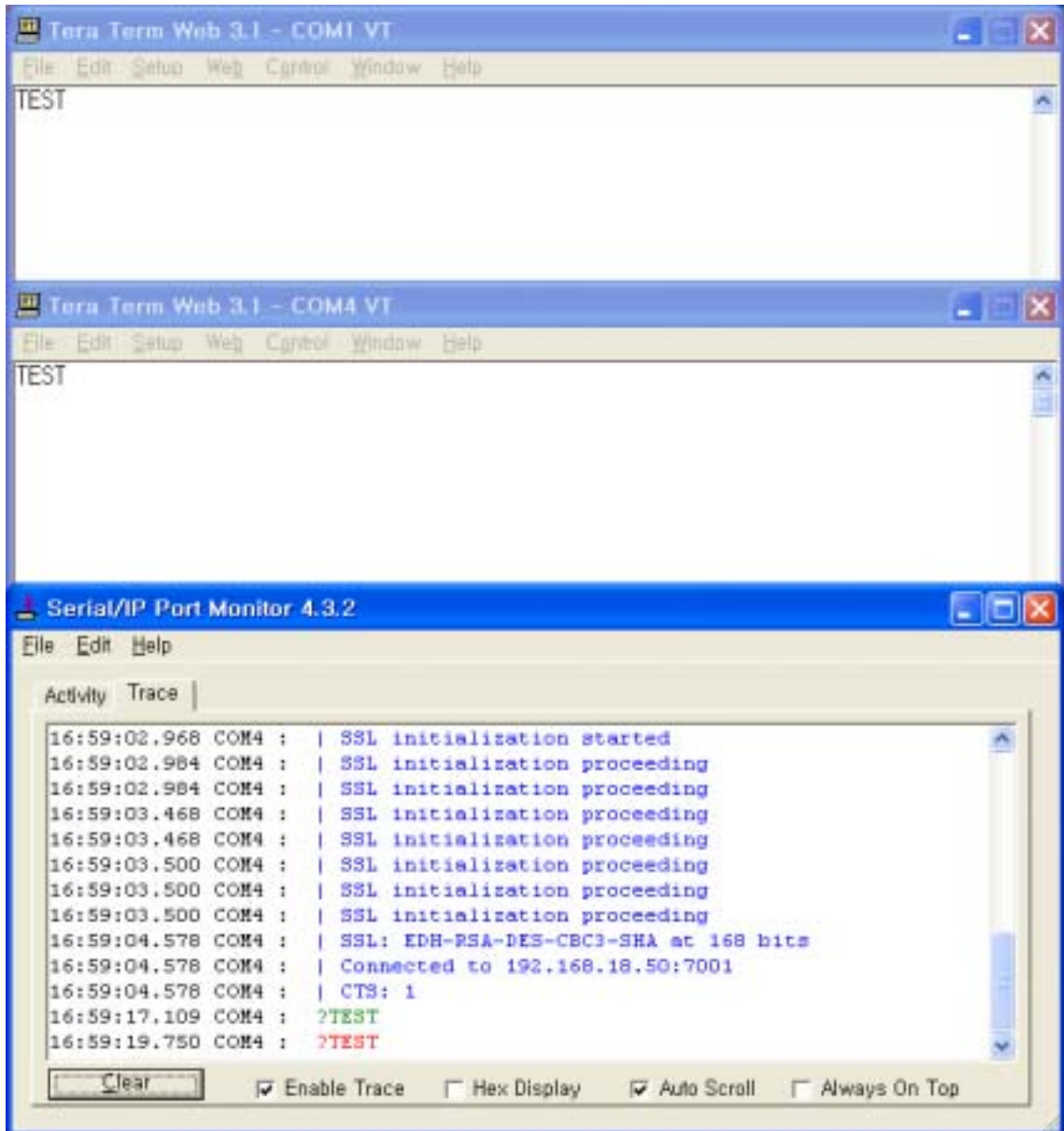


- Server Client .
- Use SSL/TLS Encryption with Enable .
- Encryption method SSLv3 or TLSv1 ,SSL v3 only TLS v1
- Device Server Encryption method

### 4.1.4

- 가 Virtual COM Port Open Serial/IP Device Server
- TCP SSL .
- Serial/IP Device Server





NOTE:

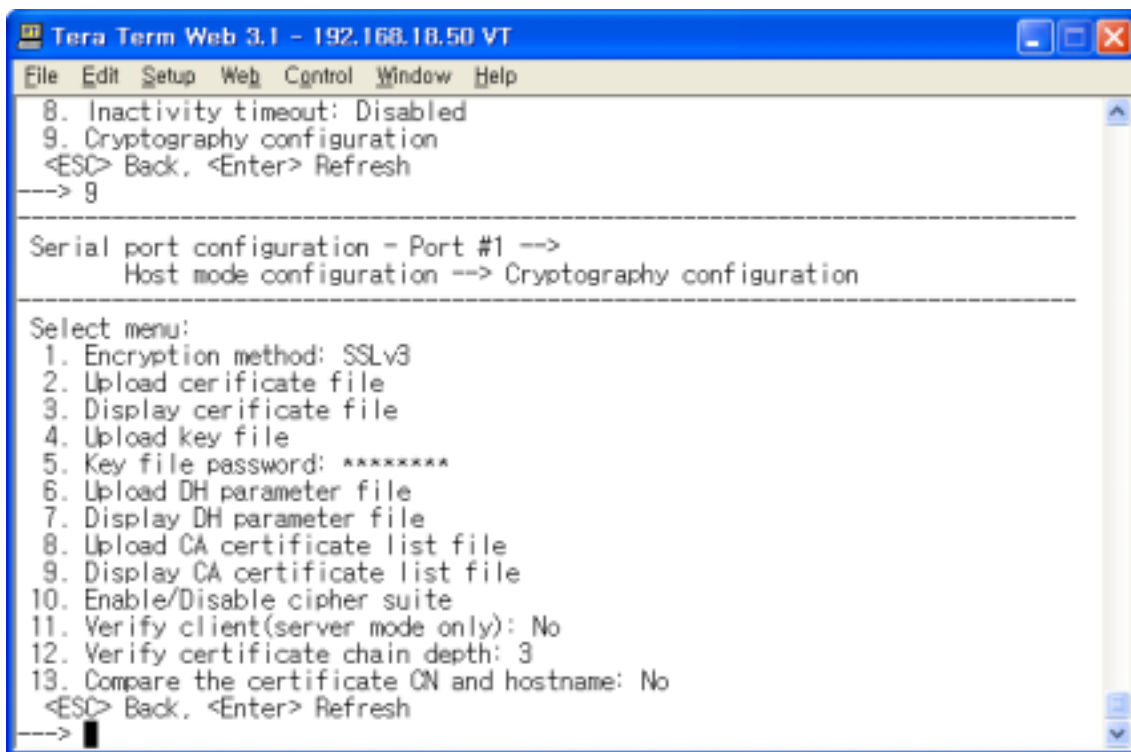
Device Server	Encryption Method	Serial/IP
Device Server	Serial/IP	
SSLv3 Rollback to v2	SSL v3 or TLS v1 SSL v3 Only TLS v1 Only	Serial/IP method
SSLv3	SSL v3 Only	
TLSv1	TLS v1 Only	

## 4.2 Serial/IP

### 4.2.1

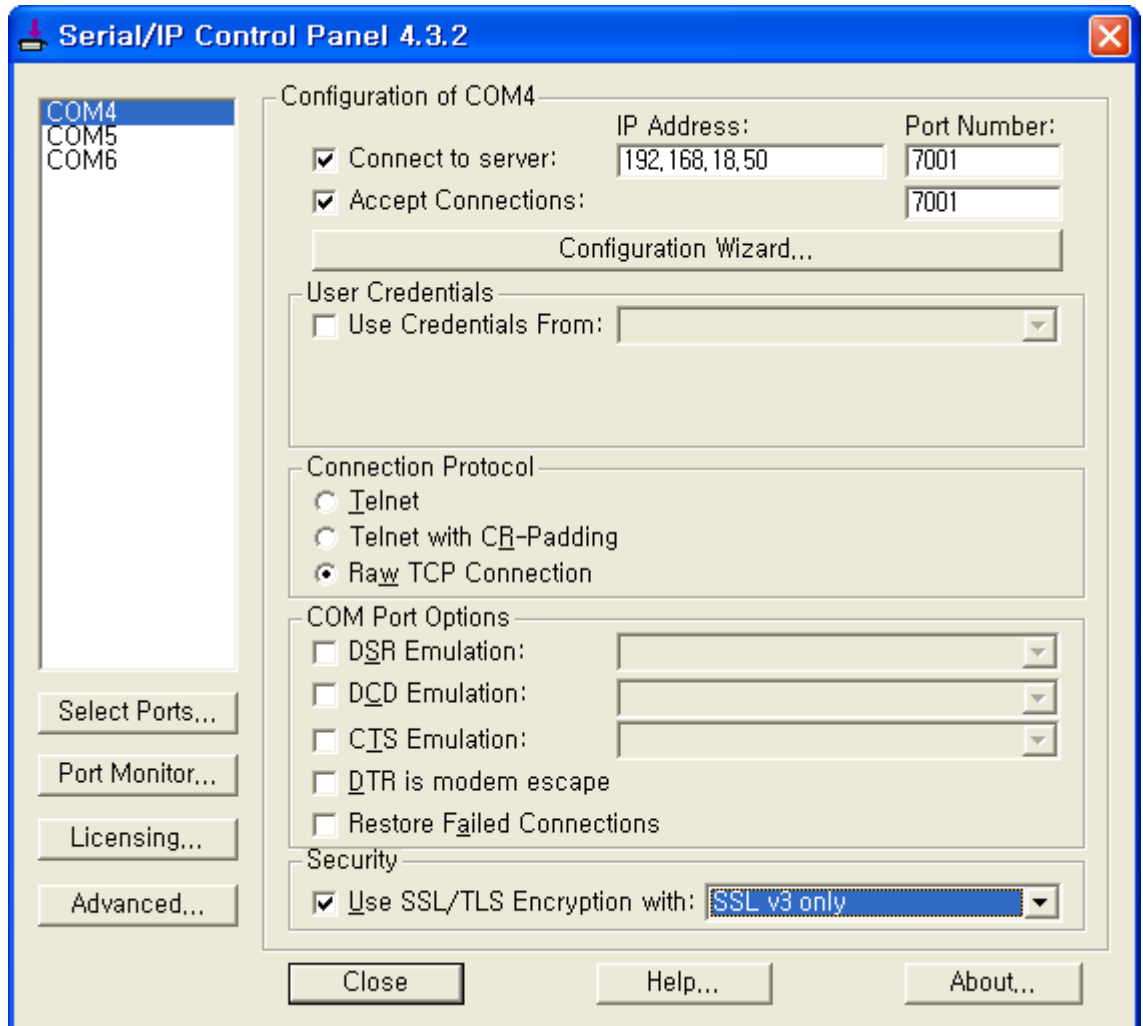
PSx10, SS, STS Device Server

### 4.2.2 Device Server

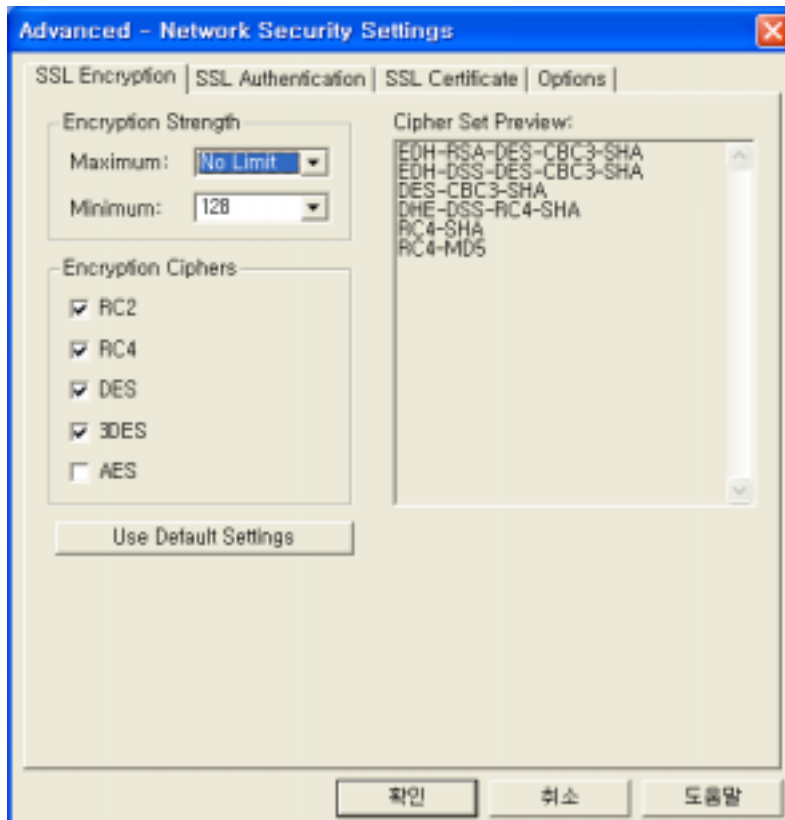


- Encryption method : SSL v3, SSLv3 rollback to V2, TLS v1
- 2. Upload certificate file: Serial/IP Samplecert.pem
- 4. Upload key file: Serial/IP Samplecert.pem
- 5. Key file password: password
- 8. Upload CA certificate list file: Serial/IP Sampleca.pem
- 10. Enable/Disable cipher suite:
- Server Client Host Mode .

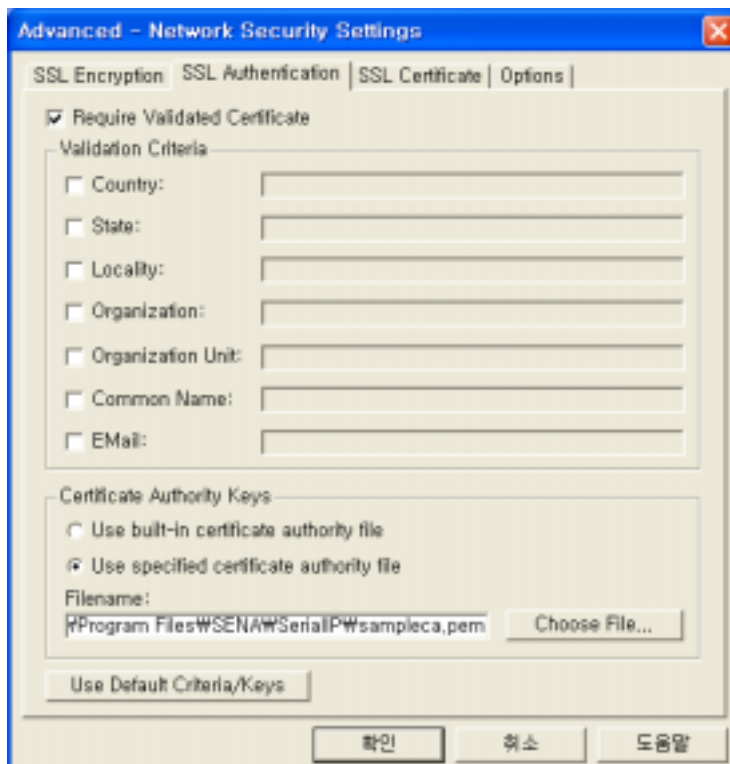
### 4.2.3 Serial/IP



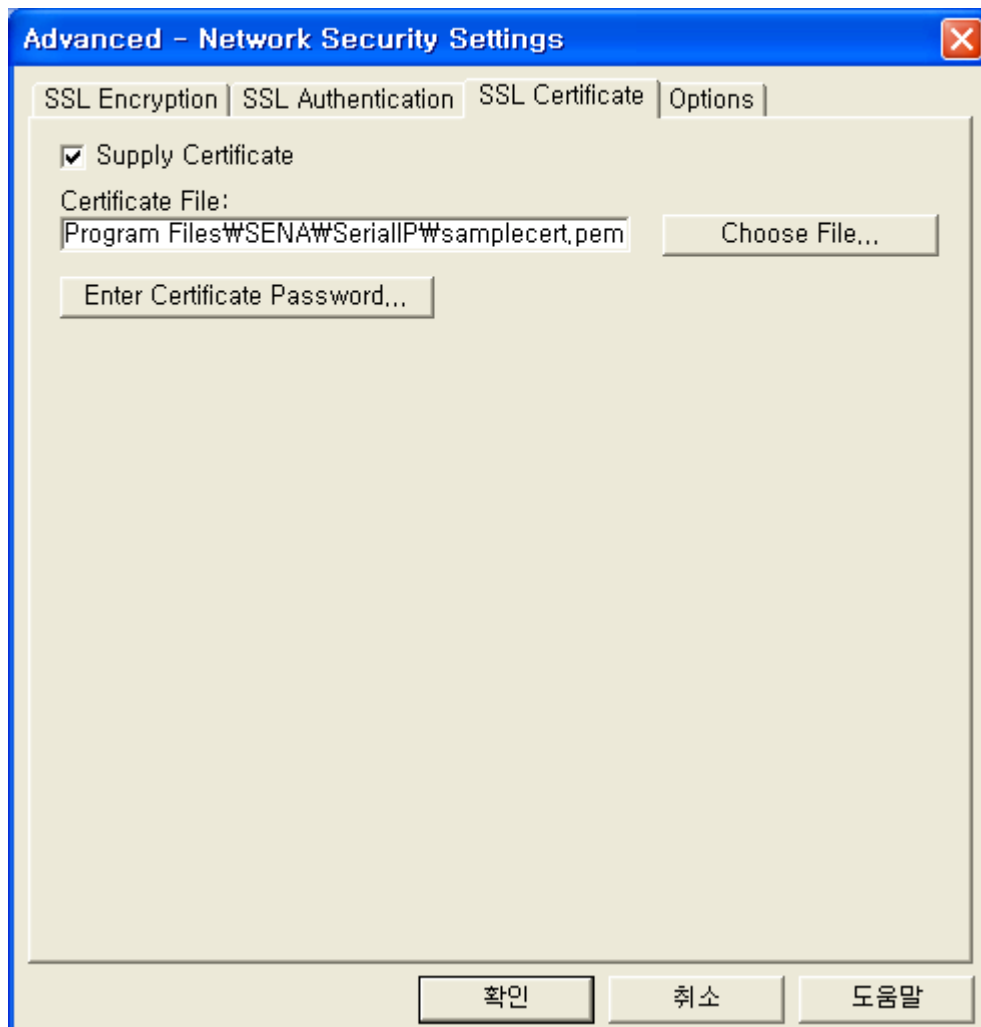
- Security .(SSL V3 or TLS V1, SSL v3 Only, TLS v1 Only)
- Encryption Cipher .-
- [Advanced...] .



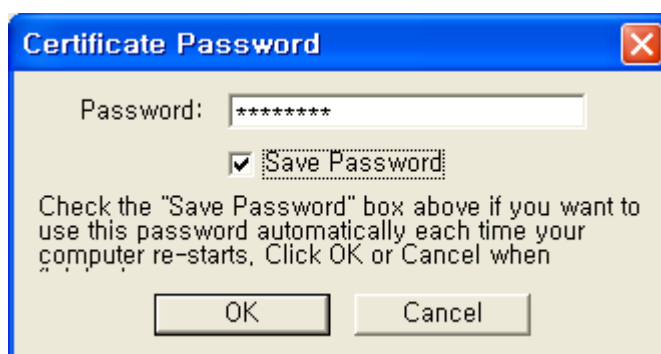
- CA File (.sampleca.pem )



- Certificate file (.samplecert.pem )

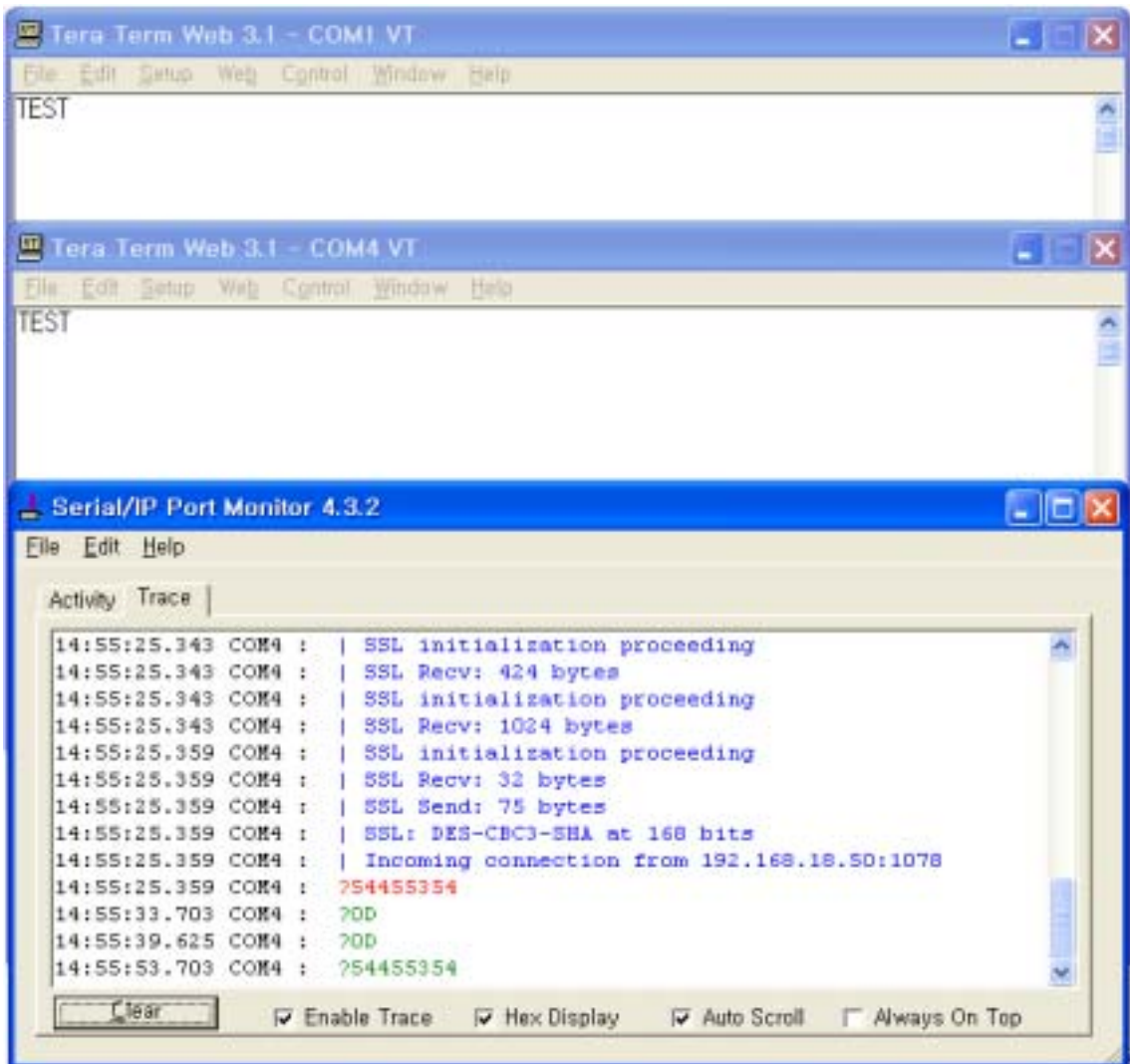


- Password (password )



#### 4.2.4

- Virtual COM Port COM4
- Device Server COM1
- Device Server Serial/IP Listen Port
- SSL SS Serial/IP



## 5.

- Serial/IP Device Server Client Server  
가 TCP TCP
- Client가
- Client Server
- Port Monitor
- Serial/IP Device Server  
가
- : Ethernet
- (VirtualCOM 가 )
-